

Ultimate Miata Door Bushings



Apple Dongle

[VIEW IN BROWSER](#)

updated 30. 12. 2023 | published 30. 12. 2023

Summary

Solid door bushings for your Miata of any generation. Already oriented for best results; print with high perimeter count

[Hobby & Makers](#) > [Automotive](#)

Tags: [bushing](#) [miata](#) [mx5](#) [mazdamiata](#) [mazdamx5](#) [nb](#) [na](#) [nb2](#) [nbfl](#)

After testing numerous printable door bushings, I found most to be unsatisfactory. They either didn't fit properly, required sanding, were challenging to print, or lacked sufficient adjustability.

These solid bushings address these issues by offering a perfect fit for a 10mm socket, regardless of the screw's placement, with some good room for adjustability. The bottom surface has been slightly chamfered to prevent elephant foot.

No, **they do not increase chassis rigidity**. Yes, they do reduce NVH in most cases, which gives the feel of having a “stiffer” car. They do also add quite a bit of lightness over the OEM ones (~70g reduction in total).

STEP and F3D files also included, feel free to remix

The “_Resin” files have been slightly modified to prevent cups when printing flat on the bed

Model files



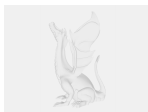
bushingstandard.stl



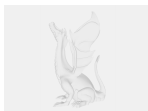
bushingslotted1.stl



bushingslotted2.stl

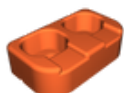


ultimate-door-bushings.step



ultimate-door-bushings.f3d

☐ Fusion 360 file



bushingslotted1_resin.stl

License

This work is licensed under a
[Creative Commons \(4.0 International License\)](https://creativecommons.org/licenses/by-nc-sa/4.0/)



Attribution—Noncommercial—Share Alike

- ✗ | Sharing without ATTRIBUTION
- ✓ | Remix Culture allowed
- ✗ | Commercial Use
- ✗ | Free Cultural Works
- ✗ | Meets Open Definition