

Bug Bot Maze



DoomMeister

[VIEW IN BROWSER](#)

updated 2. 7. 2023 | published 2. 7. 2023

Summary

Maze parts for Bristlebots, Brush Bots or Hexbug® or Other small vibrating bug bot.

[Learning](#) > [Other 3D Objects for Learning](#)

Tags: [bristlebot](#) [maze](#) [bugbot](#) [hexbug](#) [stem](#)

A selection of maze parts for your miniature bot. There are 2 sets of stl files, one optimised for 0.4mm nozzle profiles (with 0.2mm layer height) and one for 0.6mm nozzle (0.3mm layer heights).

They clip together on a flat surface and are based around a grid system so you should be able to make compact complex mazes with these blocks.

There is a fusion 360 file included which is semi-parametric, if you want to optimise for different print profiles or track widths / height you can do this by adjusting the user parameters in the file.

Model files



0.6 Nozzle

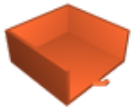
12 files



06-onramp-f.stl



06-teeblock-r.stl



06-endblock.stl



06-endblock-m-chamferered.stl



06-onramp-m.stl



06-rightcornerblock.stl



06-endblock-f-chamfered.stl



06-quadblock.stl



06-endblock-f.stl



06-leftcornerblock.stl



06-straightblock.stl



06-teeblock-l.stl



0.4 Nozzle

10 files



04-quadblock.stl



04-teeblock-r.stl



04-onramp-m.stl



04-teeblock-l.stl



04-endblock-m-ch.stl



04-leftcornerblock.stl



04-rightcornerblock.stl



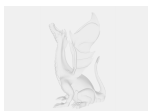
04-endblock-f-ch.stl



04-onramp-f.stl



04-straightblock.stl



bugmaze4.f3d

License

This work is licensed under a
[Creative Commons \(4.0 International License\)](https://creativecommons.org/licenses/by/4.0/)



Attribution

✗ | Sharing without ATTRIBUTION

- ✓ | Remix Culture allowed
- ✓ | Commercial Use
- ✓ | Free Cultural Works
- ✓ | Meets Open Definition