

TX16 ELRS antennaholder



T3000_FPV

[VIEW IN BROWSER](#)

updated 2. 7. 2023 | published 2. 7. 2023

Summary

Antennenhalter für das ELRS Modul einer TX16 Holder for the TX16 and the ELRS modul antenna

[Hobby & Makers](#) > [RC & Robotics](#)

Tags: [thingiverse](#)

Antennenhalter für das ELRS Modul einer TX16

Holder for the TX16 and the ELRS modul antenna

Print Settings

Printer Brand:

Creality

Printer:

CR-6 SE

Rafts:

Doesn't Matter

Supports:

Doesn't Matter

Resolution:

0.2 mm

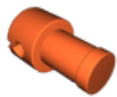
Infill:

50 %

Filament: NoName TPU

Category: R/C Vehicles

Model files



antennaholder.stl

[Find source .stl files on Thingiverse.com](#)

License ©

This work is licensed under a
Creative Commons (4.0 International License)



Attribution

-
- ✗ | Sharing without ATTRIBUTION
 - ✓ | Remix Culture allowed
 - ✓ | Commercial Use
 - ✓ | Free Cultural Works
 - ✓ | Meets Open Definition