



Rainbow Lorikeet Color Lithophane



RMECU311

[VIEW IN BROWSER](#)

updated 2. 7. 2023 | published 2. 7. 2023

Summary

Rainbow Lorikeet Color Lithophane made using Luban 3D.

[Art & Design](#) > [Other Art & Designs](#)

Tags: [lithophane](#)

Printed at 0.15 layer height. I use my inkjet printer to print the .jpg file the same size as the model and attach it to the back of the lithophane to show the color through the lithophane when backlit. I used spray adhesive to hold the printed picture in place. Also listing the models dimension specs to help with printing the picture for backlighting. Cool or Plain white filaments seem to work best.

*Not sure that you can download the backlight picture correcting with the options I'm given to upload it, so adding the correct .jpg file and .stl in the attached zip file.

***For personal using only, I do not own this image so please follow proper rules for copyright if there are any. Thanks!

>>>>> Lithophane settings <<<<<<

Shape: Arc

Arc angle: 30

Sphere angle: 180

Model diameter: 50

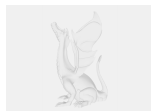
Cone top diameter: 40
Cone bottom diameter: 60
Model X size: 140.749
Model Y size: 50
Model Z size: 115
Minimum thickness: 0.8
Maximum thickness: 3.2
Resolution: 0.1
Slant angle: 10
Border size: 1
Border thickness: 4
Base length: 10
Base thickness: 4

Model files



rainbowlorikeet.stl

Other files



lorikeetprintables.zip

License ©

This work is licensed under a
Creative Commons (4.0 International License)



Attribution-NonCommercial

-
- ✗ | Sharing without ATTRIBUTION
 - ✓ | Remix Culture allowed

- ✖ | Commercial Use
- ✖ | Free Cultural Works
- ✖ | Meets Open Definition