



Blackmagic ATEM Mini Extreme mount bracket



John Foerch

[VIEW IN BROWSER](#)

updated 2. 7. 2023 | published 2. 7. 2023

Summary

Bracket to mount a Blackmagic ATEM Mini Extreme onto a Penn Elcom R1290/1U Sliding Rack Tray

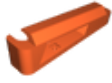
[Gadgets](#) > [Photo & Video](#)

This bracket is for mounting a Blackmagic ATEM Mini Extreme onto a Penn Elcom R1290/1U Sliding Rack Tray. Use 10-24 bolts and square nuts. (Washers also advised.) The left bracket is provided - just mirror it in the slicer to get the right bracket. It prints without supports on its outside face - you will need to rotate it in the slicer for print orientation. This may work with other ATEM Mini models, but it was developed specifically for the ATEM Mini Extreme and hasn't been tested with any others. The geometry of the mount points is simple enough that if you need to mount your ATEM Mini in a different way, it should be straightforward to edit the STL in modeling software. I am also uploading the FreeCAD (version 0.20) model for any that would like to edit it in CAD.

This is an original model but special thanks to the following makers whose designs I referenced:

- Spudd1 [ATEM Mini & Mini Pro mounts](#)
- richardhuss [ATEM Mini Extreme mount](#)

Model files



atem_mini_extreme_mount.stl



atem_mini_extreme_mount_v5.fcstd

License ©

This work is licensed under a
[Creative Commons \(International License\)](#)



Public Domain

-
- ✓ | Sharing without ATTRIBUTION
 - ✓ | Remix Culture allowed
 - ✓ | Commercial Use
 - ✓ | Free Cultural Works
 - ✓ | Meets Open Definition