



Improved swivel (wing) mount for RC plane wall storage system



sbuerger

[VIEW IN BROWSER](#)

updated 2. 7. 2023 | published 2. 7. 2023

Summary

Swivel mount with increased wall distance to use for RC planes with a skid

[Hobby & Makers](#) > [RC & Robotics](#)

Tags: [plane](#) [update](#) [wing](#) [flyingwing](#) [wallmount](#) [rc](#)
[rcplane](#)

This is an addition to my [RC plane modular wall storage system](#). To make use of these files, you must as well download the basic files found under the above link.

These swivel type wing holders are quite the same as those in the original file set - with one essential difference: They increase the distance between the model and the wall by 36 mm, thus allowing to mount planes with a landing skid underneath the fuselage.

They use the same bases and screws as the original swivels.

As usual, find details in the attached PDF manual. It's just the same manual as that on the project's main page - I didn't bother to change it since printing and mounting the new swivels is just the same as with the original ones.

This remix is based on



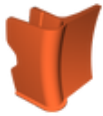
RC plane modular wall storage system

by sbuerger

Model files



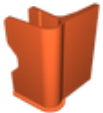
swivel-mount-curved-for-skid-left.stl



swivel-mount-curved-for-skid-right.stl



swivel-mount-straight-for-skid-left.stl



swivel-mount-straight-for-skid-right.stl

Other files



rc-plane-wall-storage_manual-v2.pdf

License

This work is licensed under a
Creative Commons (4.0 International License)



Attribution—Noncommercial—Share Alike

- ✗ | Sharing without ATTRIBUTION
- ✓ | Remix Culture allowed
- ✗ | Commercial Use
- ✗ | Free Cultural Works
- ✗ | Meets Open Definition