

## Pin2DMD LED Display frame

 **latenite04**

[VIEW IN BROWSER](#)

updated 3. 7. 2023 | published 3. 7. 2023

### Summary

This is a frame to mount two P2.5 64x32 led video panels side by side for use in a pinball machine. The first layer is...

[Hobby & Makers](#) > [Electronics](#)

Tags: [thingiverse](#)

This is a frame to mount two P2.5 64x32 led video panels side by side for use in a pinball machine. The first layer is solid because I had better bed adhesion when the print head wasn't skipping around to layout the holes. The openings are easily cut out with an x-acto knife after printing. The center mounting hole is modeled to take an 8/32 nut and screw so if there is any flex in the panel when mounted it can be leveled out.

I used this to build a pin2dmd color display: [www.pin2dmd.com](http://www.pin2dmd.com)

### Print Settings

#### Printer Brand:

Creality

#### Printer:

CR-10

**Rafts:**

No

**Supports:**

No

**Resolution:**

.2

**Infill:**

20

**Filament:** solutech3d pla black

Category: Electronics

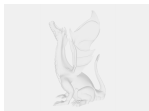
## Model files



pin2dmd\_3pieceframe\_left.stl



pin2dmd\_3pieceframe\_right.stl



pin2dmd\_3pieceframe.scad



pin2dmd\_3pieceframe\_center.stl

[Find source .stl files on Thingiverse.com](#)

# License

This work is licensed under a  
**Creative Commons (4.0 International License)**



**Attribution—Noncommercial—Share Alike**

---

- ✗ | Sharing without ATTRIBUTION
- ✓ | Remix Culture allowed
- ✗ | Commercial Use
- ✗ | Free Cultural Works
- ✗ | Meets Open Definition