

## South Park Pinball Kenny Opto Protector

 **latenite04**

[VIEW IN BROWSER](#)

updated 3. 7. 2023 | published 3. 7. 2023

### Summary

I designed these guards to fit over the led's and keep the ball from knocking them out of alignment. They replace the...

[Hobby & Makers](#) > [Other Ideas](#)

Tags: [southpark](#) [pinball](#) [thingiverse](#)

I designed these guards to fit over the led's and keep the ball from knocking them out of alignment. They replace the mounting post sleeve under the plastics. I realized when trying to install the left one that I would have to remove the left plastic to get it in so I also made a second style that snaps over the existing post.

10/08/2018 - I added three more models with an added block to support the wire ball guide. My guide kept getting pushed down, which is probably what caused the led to get hit in the first place. I had to remove the opto bracket to get it in but the guide seems to be staying in place now.

3/10/2019 - Added a left protector with a cutout to work with my left plastic support. <https://www.thingiverse.com/thing:3446493>

### Print Settings

**Printer Brand:**

Crealitiy

**Printer:**

CR-10

**Rafts:**

No

**Supports:**

No

**Resolution:**

.2

**Infill:**

30

**Notes:**

I printed mine in pla with 3 shells. The snap in one I printed standing up but the other two I printed flat with the tab side down.

Category: Other

## Model files



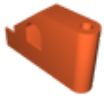
kennyledprotectorsnapinleftwwiresupport.stl



kennyledprotectorleftwwiresupport.stl



kennyledprotectorsnapinleft.stl



**kennyledprotectorright.stl**

---



**kennyledprotectorleft.stl**

---



**kennyledprotectorleftwithcutoutforplasticprotector.stl**

---



**kennyledprotectorrightwwiresupport.stl**

[Find source .stl files on Thingiverse.com](#)

## License ©



This work is licensed under a  
**Creative Commons (4.0 International License)**

**Attribution-NonCommercial**

---

- ✗ | Sharing without ATTRIBUTION
- ✓ | Remix Culture allowed
- ✗ | Commercial Use
- ✗ | Free Cultural Works
- ✗ | Meets Open Definition