



Bowser Figure (Super Mario Bros)



Desk_Drawer

[VIEW IN BROWSER](#)

updated 17. 7. 2023 | published 17. 7. 2023

Summary

A large figurine of Bowser from the Super Mario Bros series.

[Toys & Games](#) > [Action Figures & Statues](#)

Tags: [statue](#) [bowser](#) [koopas](#) [figurine](#) [mariokart](#) [games](#)
[figure](#) [supermario](#) [gaming](#) [supermariobros](#) [nintendo](#)
[mario](#)

This Bowser/King Koopa statue is free-standing, game-accurate, and a great display piece.

Printing Guidelines

The STL file has each part in a position that allows for the supports to be removed as easily as possible, and for the quickest print time. There may be more efficient orientations.

For supports, 15% overhang threshold with extra support on Bowser's tail is the minimum my printer could work with. Sliced in PrusaSlicer.

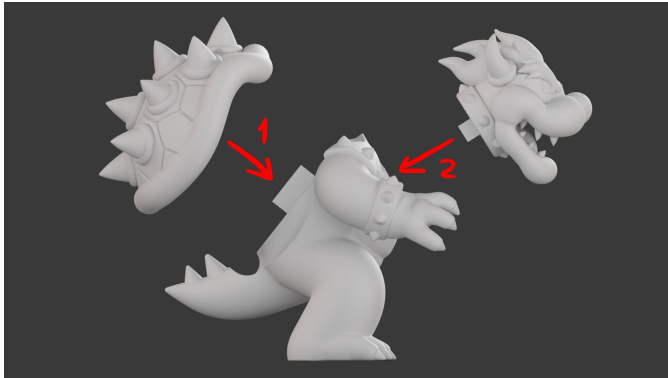
Infill 3% rectilinear.

Assembly Instructions

Bowser comes in 3 parts for ease of printing and painting.

Remove support material. Supports inside the mouth may be slightly difficult to remove, but a pair of pliers will work to pull them out.

Place the shell on first, then the head.



Model files



bowser_print.stl



bowserhead.stl



bowserbody.stl



bowershell.stl

License ©

This work is licensed under a
[Creative Commons \(4.0 International License\)](https://creativecommons.org/licenses/by-nc-sa/4.0/)



Attribution—Noncommercial—Share Alike

- ✗ | Sharing without ATTRIBUTION
- ✓ | Remix Culture allowed
- ✗ | Commercial Use
- ✗ | Free Cultural Works
- ✗ | Meets Open Definition