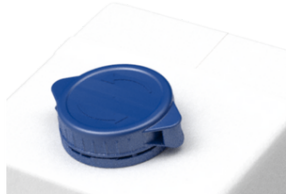


Milk Carton Opener



Blizzard



[VIEW IN BROWSER](#)

updated 22. 7. 2024 | published 22. 7. 2024

Summary

Allows you to effortlessly open any drink carton like milk cartons using a Tetra Pak™ WingCap™ 30 cap.

[Household](#) > [Kitchen](#)

Tags: [hexagon](#) [opener](#) [tool](#) [cap](#) [accessibility](#) [compact](#)
[milk](#) [tetrapak](#) [arthritis](#) [kitchengadget](#) [hexagons](#)
[bestagon](#) [milkcarton](#) [leverage](#) [wingcap](#)

“Now you can have milk every day!”

Most of the milk we can buy in cartons now comes with Tetra Pak™ WingCap™ 30 caps, which sometimes can be difficult or painful to open by hand when they are unopened, as they require more force to break the seal while opening, especially if you or your significant other doesn't have a lot of hand strength or have long fingernails. This could also be helpful if you have arthritis or some form of accessibility issue.

If you like what I'm doing, please give it a like consider [joining my club](#) or buying me a coffee! ☺

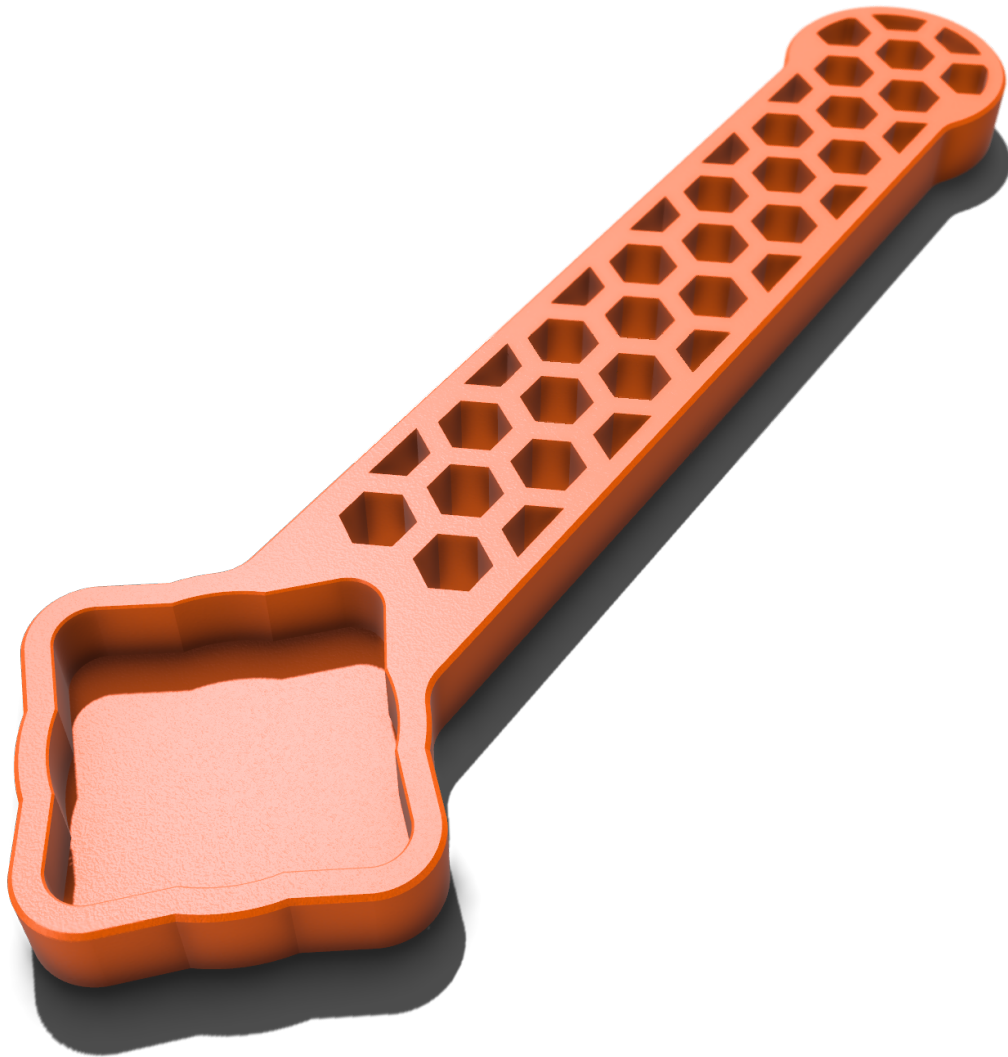


Buy me a coffee

Versions

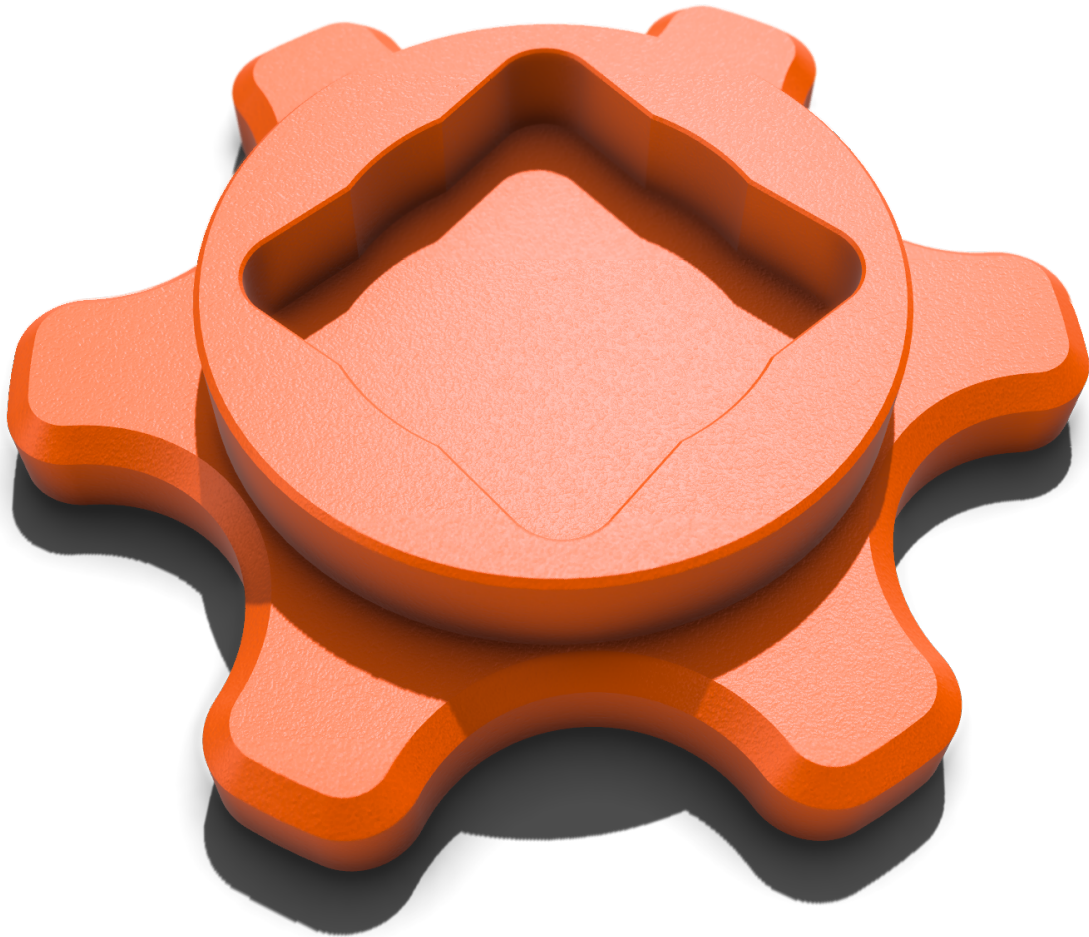
There are three different versions. They all have in common that the end you place onto the cap includes two orientations the cap can be in, making it easier to place, no matter the orientation the cap is in. They are ordered from the least amount of force required to the most amount of force required:

Leverage



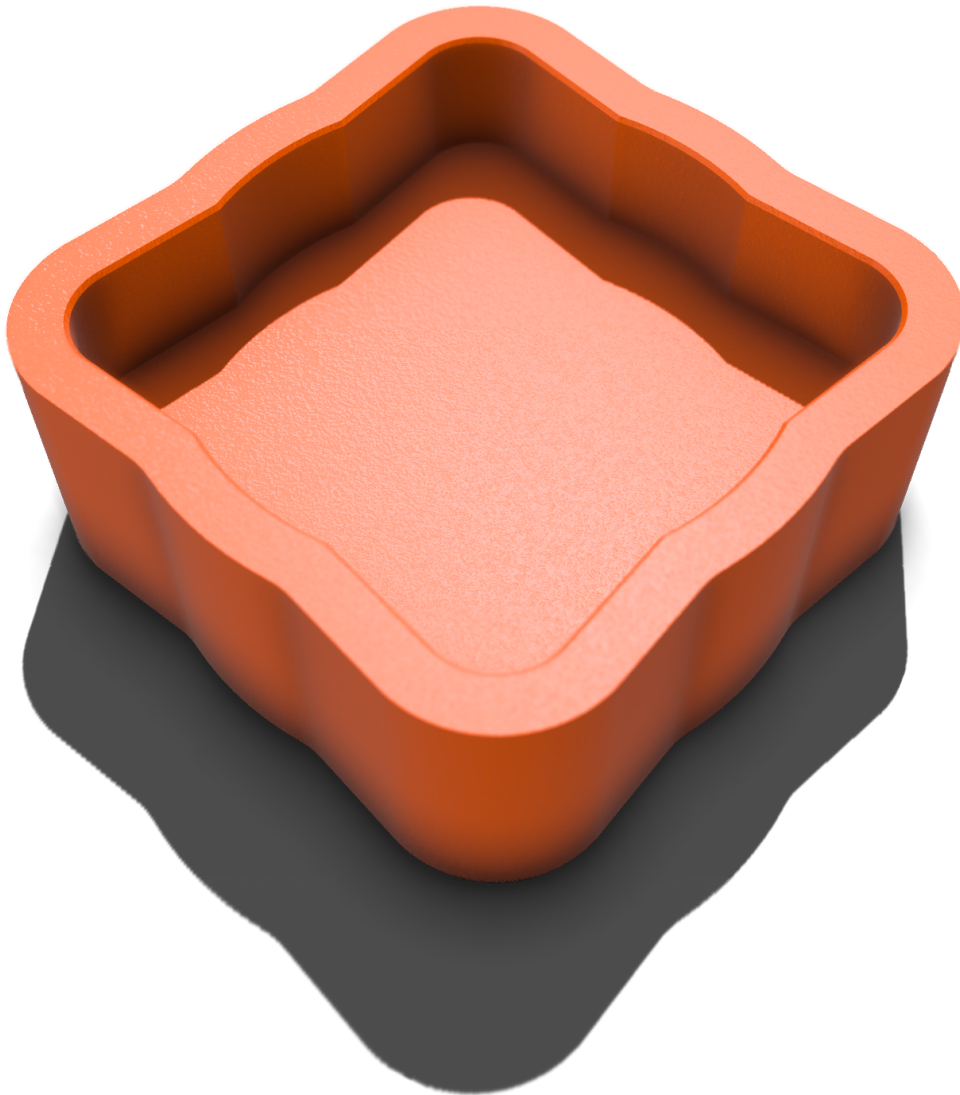
Takes up more space, but requires the least amount of force to open the caps, as leverage is used. Caps are the easiest to open with this version. It also has a hexagonal pattern on it, which makes it look cooler, as hexagons are the bestagons.

Compact



Takes up less space, but requires a bit more force than the leverage version. Still, it is a lot easier than opening the cap by hand. The ergonomic shape allows it to be used equally well by people with small or large hands.

Minimal



Takes up the least amount of space and requires about the same amount of force as the compact version, but it lacks the ergonomic shape that makes it easier to grab the compact version. Still, due to its square-ish shape and being much thicker than the cap, it's easier to open the cap than without it.

Printing instructions

Prints easily without supports using PLA at 0.2 mm layer height in the default model orientation.

Other materials should work as well, as long as they allow for some amount of bridging, like PETG. But I wouldn't recommend printing this in PA or PC.

You can also use different layer heights without any issues.

Compatibility

This is the kind of cap (Tetra Pak™ WingCap™ 30) this tool can open ([image source](#)):



Model files



Leverage version

2 files



milk-carton-opener-leverage.stl

☐ STL of the leverage version to print on your 3D printer

milk-carton-opener-leverage.step

☐ STEP design file to modify the leverage version in your 3D modeling software



Compact version

2 files



milk-carton-opener-compact.stl

☐ STL of the compact version to print on your 3D printer

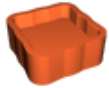
milk-carton-opener-compact.step

📄 STEP design file to modify the compact version in your 3D modeling software



Minimal version

2 files



milk-carton-opener-minimal.stl

📄 STL of the minimal version to print on your 3D printer

milk-carton-opener-minimal.step

📄 STEP design file to modify the minimal version in your 3D modeling software

License



This work is licensed under a
Creative Commons (4.0 International License)

Attribution-ShareAlike

- ✗ | Sharing without ATTRIBUTION
- ✓ | Remix Culture allowed
- ✓ | Commercial Use
- ✓ | Free Cultural Works
- ✓ | Meets Open Definition