

Puzzle, fit on Prusa mini



Philipp Schmid

[VIEW IN BROWSER](#)

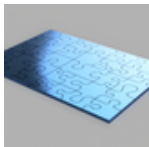
updated 9. 10. 2023 | published 9. 10. 2023

Summary

Rearranged for Prusa mini 18x18cm

[Toys & Games](#) > [Puzzles & Brain-teasers](#)

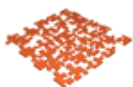
This remix is based on



(Un)classic puzzle with a twist ;)

by R4V3NH4

Model files



puzzle_mini.stl

License

This work is licensed under a
Creative Commons (4.0 International License)



Attribution—Noncommercial—Share Alike

- ✗ | Sharing without ATTRIBUTION
- ✓ | Remix Culture allowed
- ✗ | Commercial Use
- ✗ | Free Cultural Works
- ✗ | Meets Open Definition