



## 10.1 DES epaper display enclosure with epdiy v7 controller



Fasani

[VIEW IN BROWSER](#)

updated 7. 10. 2023 | published 7. 10. 2023

### Summary

Ever thought about making a nice frame with a full color display? Well this is my take to make it happen using epdiy

[Hobby & Makers](#) > [Electronics](#)

Tags: [epaper](#) [esp32s3](#) [epdiy](#)

### Hardware required:

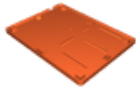
1. 10.1 display fabricated by <http://en.wf-tech.com> sold by Good-Display dot com
2. [epdiy v7 parallel epaper controller](#) (branch s3\_lcd uses 40 pin, 16 bit connector)
3. Any LiPo 3.7V battery

Print base with supports, top part without supports.

Use Blender for custom modifications.

Buy one controller board if you like the project. Note: 10.1 DES will be available after some months. Contacted Wuxi factory and they never replied, probably never will, since they are not interested in selling to makers and probably you can buy only through a reseller.

# Model files



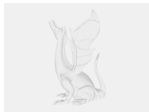
## 101\_base.stl

☐ Print in any material, white or black is the nicest for me



## 102\_top.stl

☐ Printed this in transparent PETG since is better for the screws



## 102\_base.blend

☐ Blender file

# License

This work is licensed under a  
[Creative Commons \(4.0 International License\)](https://creativecommons.org/licenses/by/4.0/)



## Attribution

- ✗ | Sharing without ATTRIBUTION
- ✓ | Remix Culture allowed
- ✓ | Commercial Use
- ✓ | Free Cultural Works
- ✓ | Meets Open Definition