



## LS3 Yellow Bird



Tomson

[VIEW IN BROWSER](#)

updated 2. 5. 2022 | published 24. 3. 2021

## Summary

Ongoing project. This project it not finished. Remix from different models and inspirations

[Toys & Games](#) > [Vehicles](#)

Tags: [motor](#) [mechanicaltoy](#) [engine](#) [racing](#) [ls3](#)

Remix from different models and inspirations. **CraigAT23** LS xx Engine - Motor Build v001 | 3D CAD Model Library | GrabCAD. ericthepoolboy Chevy Camaro LS3 V8 Engine - Scale Working Model by ericthepoolboy - Thingiverse. **Joko Engineering** FreeCAD Super Charger Lobes | 3D CAD Model Library | GrabCAD and dancan13f have being an inspiration with his great models. It started with ericthepoolboys LS3 but i wanted to have a supercharger and found the space claim model CraigAT23 have make. The lobes for the charger was missing and i could not find the real one that Whipple using and i'm not good enough to make it myself but Joko made a nice model of traditional lobes i remix. This is a project i started with in October but too many projects so this have been stuck for a while. It was first intended to be finished before I posted it, but I will share it with you as far as I have come and I will add STEP for engine blocks etc. So you can more easily modify according to your own wishes. One may or may not work and that is the Jesel Beltdrive for the Camshaft. I have not tried it bec i have no belt yet. But i have upload it as STEP in case something need to change. I have changed the models to fit ericthepoolboys Crankshaft assy

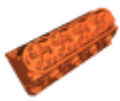
and all other internal part like Camshaft etc. and i have change skrews to fit M3 and M2. The blue engine with cylindershead is erics and it fits with CraigAT23 cylinderheads so the most part should fit if you have erics model but don't want to start from beginning.

## Model files



### Cylinderhead and valvecover

5 files



**cat23-ls3-cylinderhead-boltadapted-v2-v10.stl**



**cat23-valvecover-driver-side.stl**



**cat23-valvecover-passenger-side.stl**



**cat23-oil-fill-cap.stl**

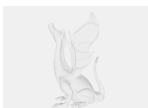


**cat23-stud-for-fastener-valvecover.stl**



### STEP

7 files



**ls3\_yellow-bird-v131.step**



**ls3\_yellow-bird-cylinder-sleeves-v1.step**



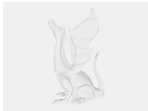
**ls3\_yellow-bird-short-block-empty.step**



**ls3\_yellow-bird-crankshaft-assy.step**



**ls3\_yellow-bird-crank-and-cam-gear-pulley.step**



**ls3\_yellow-bird-cam-suport-cover.step**

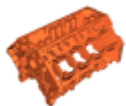


**ls3\_yellow-bird-crankshaft-assy.step**



**Shortblock Folder**

5 files



**engine-block-ls3\_yellow-bird-v121.stl**



**ls3\_yellow-bird-crankshaft-assy-v133.stl**



**ls3\_yellow-bird-cylinder-sleeves-v1-v1.stl**



**valley-plate-ls3\_yellow-bird-v127.stl**



**back-cover-ls3\_yellow-bird-v128.stl**



**Whipplecharger**

13 files



**whipplecharger-lobe-set.stl**



**whipplecharger-pulley-v134.stl**



**whipplecharger-outer-driveshaft-ls3\_yellow-bird-v.stl**



**whipplecharger-inner-driveshaft-ls3\_yellow-bird-v.stl**



**whipplecharger-drive-gear-ls3\_yellow-bird-v115.stl**



**whipplecharger-spur-gear-ls3\_yellow-bird-v116.stl**



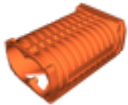
**whipplecharger-front-bearing-house-ls3\_yellow-bir.stl**



**whipplecharger-driveshaft-house-ls3\_yellow-bird-v.stl**



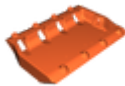
**whipplecharger-gear-cover-ls3\_yellow-bird-v113.stl**



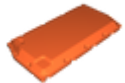
**whipplecharger-main-house-ls3\_yellow-bird-v111.stl**



**whipplecharger-emblem-ls3\_yellow-bird-v114.stl**



**intake-manifold-ls3\_yellow-bird-v103.stl**

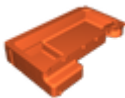


**intake-manifold-cover-ls3\_yellow-bird-v104.stl**



## **Oilpan**

4 files



**oil-pan-ls3\_yellow-bird-v100.stl**



**oil-plug-ls3\_yellow-bird-v106.stl**



**oil-filter-ls3\_yellow-bird-v101.stl**



**oilfilter-thread-ls3\_yellow-bird-v102.stl**

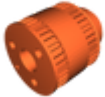


**Jesel Beltdrive**

5 files



**camsuport-cover-ls3\_yellow-bird-v105.stl**



**crank-gear-ls3\_yellow-bird-v109.stl**



**cam-gear-inner-ls3\_yellow-bird-v107.stl**



**cam-gear-outer-ls3\_yellow-bird-v108.stl**

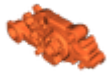


**crank-pulley-ls3\_yellow-bird-v110.stl**

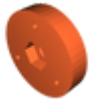


**Waterpump**

7 files



**ls3\_waterpump-house-v34.stl**



**ls3\_waterpump-hub-v37.stl**



**ls3\_waterpump-pulley-v39.stl**



**ls3\_water-outlet-v38.stl**



**ls3\_water-inlet-v36.stl**



**ls3\_defroster-1-v34.stl**



**ls3\_defroster-2-v35.stl**

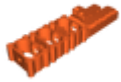


**Oilpump**

13 files



**oilpump-bearinghouse-set-biofusion-v1.3mf**



**oilpump-set-biofusion.3mf**



**oilpump-front-bearinghouse.stl**



**oilpump-rear-bearinghousev1.stl**



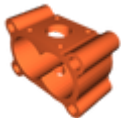
**oilpump-split-1.stl**



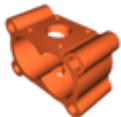
**oilpump-split-2.stl**



**oilpump-1.stl**



**oilpump-2.stl**



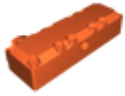
**oilpump-3.stl**



**oilpump-gear.stl**



**drysump-oilpump-tryckror-v16.stl**



**drysump-oilpump-oil-inlet-v17.stl**

---



**rear-oilpump-mount.stl**



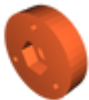
## **Servopump**

4 files



**ls3\_servopump-house-v68.stl**

---



**ls3\_servopump-hub-v68.stl**

---



**ls3\_servopump-lid-v68.stl**

---



**ls3\_servopump-pulley-v90.stl**



## **Alternator**

6 files



**ls3\_new-top-alternator\_servo-bracket-v84.stl**

---



**ls3\_alternator-bracket-v72.stl**



**ls3\_alternator-pulley-v78.stl**



**ls3\_alternator-frontside-2-v4.stl**



**ls3\_alternator-y-connectorbridge-v72.stl**



**ls3\_alternator-backside-2-v5.stl**

## Other files



**hardware.txt**

## License

This work is licensed under a  
[Creative Commons \(4.0 International License\)](https://creativecommons.org/licenses/by/4.0/)



**Attribution**

- ✘ | Sharing without ATTRIBUTION
- ✓ | Remix Culture allowed
- ✓ | Commercial Use
- ✓ | Free Cultural Works
- ✓ | Meets Open Definition