



## Smartphone Holder W-King T-11 Bluetooth box

 **bswipe**

[VIEW IN BROWSER](#)

updated 7. 10. 2023 | published 7. 10. 2023

### Summary

It happened under the influence of wine because the smartphone was just lying around somewhere

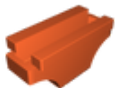
---

[Hobby & Makers](#) > [Electronics](#)

---

10 % procent infill or more like you want  
PLA / PETG

### Model files



**w-king-t11-s-holder.stl**

# License

This work is licensed under a  
**Creative Commons (4.0 International License)**



**Attribution—Noncommercial—Share Alike**

---

- ✗ | Sharing without ATTRIBUTION
- ✓ | Remix Culture allowed
- ✗ | Commercial Use
- ✗ | Free Cultural Works
- ✗ | Meets Open Definition