

# Filament Swatch - Negative Space



OurAngryBadger

[VIEW IN BROWSER](#)

updated 7. 10. 2023 | published 7. 10. 2023

## Summary

Negative Space Filament Swatches

[3D Printers](#) > [Accessories](#)

Tags: [filament](#) [colors](#) [filamentswatch](#) [swatches](#)  
[filamentswatches](#)

## Filament Swatch - Negative Space

A filament swatch design that uses negative space for the swatch names, instead of a secondary color, which takes longer to print and is more wasteful. This design also includes a hole in the corner for a key ring.

### Benefits of this design

- Print each swatch fast in 10 minutes.
- Only one color (for the swatch) necessary.
- Includes hole for key ring.
- PLA and PETG models are automatically oriented on the build plate face down for textured sheet printing.

### How to print

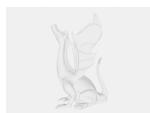
NOTE: I used Bambu Studio to make the .3MF files, I don't know if it's compatible for text editing with Prusa Slicer or not.

If you would like to print the custom ones, you will need to open the .3MF files into Bambu Studio and take a few steps:

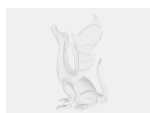
1. Open the Custom Swatch.3mf file into Bambu Studio.
2. Go to "objects".
3. Right click and "edit text" on the "BRAND HERE" object and type in the brand name for your filament.
4. Right click and "edit text" on the "TYPE HERE" object and type in the filament type (such as PLA/PETG/ABS/ASA/etc.)
5. You will probably need to move the text using the move tool to align it better, unfortunately Bambu Studio does not yet have automatic text alignment features.
6. Select the text objects, right click on them, choose "change type", and change them both to "negative part". Unfortunately, you can't change both of them at the same time due to limitations of Bambu Studio.
7. You can now print it, or optionally you can use the "place on face" tool to flip them upside down on the print bed if you are using a textured plate for a nice textured effect on the front surface.

Fortunately, you only have to take these steps for each brand and filament material type. You should save your .3MF file and just change the color for each filament swatch you are printing of that brand. It would be nice if Bambu Studio allowed to edit the text after it's converted to a negative part type, and we could have reduced steps needed.

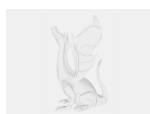
## Model files



**pla-swatch.3mf**



**petg-swatch.3mf**



**custom-swatch.3mf**



swatch.stl

## License ©

This work is licensed under a  
[Creative Commons \(4.0 International License\)](#)



**Attribution-NonCommercial**

---

- ✗ | Sharing without ATTRIBUTION
- ✓ | Remix Culture allowed
- ✗ | Commercial Use
- ✗ | Free Cultural Works
- ✗ | Meets Open Definition