

Parametric Skadis Tray - T-Nut Mounting System

 NickUfer

[VIEW IN BROWSER](#)

updated 8. 10. 2023 | published 8. 10. 2023

Summary

Fusion 360 Parametric Skadis Tray with the T-Nut Mounting System

[Hobby & Makers](#) > [Organizers](#)

Tags: [organizer](#) [tray](#) [skadis](#) [skadisholder](#) [skadistnut](#)

Description is work in progress, will add that tomorrow (08th october).

Key Features:

- Fully parametric
- Most invalid values are getting automatically limited / rectified
- Mounting hole horizontal position adjusts automatically (width is divided by 2, each hole gets one half assigned. In this half it tries to center while honoring pegboard mounting hole positions)

Model files

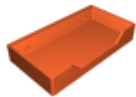


With Cutout

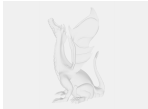
3 files



skadis-tray-with-cutout-t-nut-mounting-system.f3d



skadis-tray-with-cutout-t-nut-mounting-system.stl



skadis-tray-with-cutout-t-nut-mounting-system.step

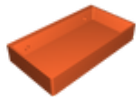


Without Cutout

3 files



skadis-tray-t-nut-mounting-system.f3d



skadis-tray-t-nut-mounting-system.stl



skadis-tray-t-nut-mounting-system.step

License ©

This work is licensed under a
[Creative Commons \(4.0 International License\)](https://creativecommons.org/licenses/by/4.0/)



Attribution

- ✗ | Sharing without ATTRIBUTION
- ✓ | Remix Culture allowed
- ✓ | Commercial Use
- ✓ | Free Cultural Works
- ✓ | Meets Open Definition