

## TriangleLab SV06/ Plus ADXL345 Mount



Pun

[VIEW IN BROWSER](#)

updated 9. 10. 2023 | published 9. 10. 2023

## Summary

Mount for the ADXL345 from Triangle-Lab

[3D Printers](#) > [Other Printer Parts & Upgrades](#)

Tags: [extrudermount](#) [trianglelab](#) [bedmount](#) [sovol](#) [adxl345](#)  
[adxl345mount](#) [adxlmount](#) [trianglelabs](#) [sv06](#) [sovolsv06](#)  
[sv06plus](#) [sovolsv06plus](#)

{Remixed from Bassamanator's [model](#) .}

**A mount for the Triangle-Lab USB [ADXL345](#).**

(Comes also in a lightweight version)

### B.O.M

- 2 x M3\*16mm
- 4 x M2\*6mm

Tighten the M3 bolts until you cannot move the mount anymore.

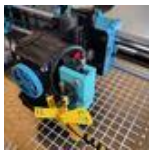
The **bed\_spacer.3mf** is only needed when mounting on the bed.

## Why don't I need threaded inserts?

You don't “need” threaded inserts if you don't have them, its a plus as (un)threading with the screws will soften the material and slip a bit. So, print in another thing than PLA, or best, use threaded inserts if you need to mount it several times

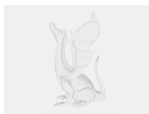
Enjoy printing!!

## This remix is based on



**Sovol SV06/Plus ADXL345 Mount Printhead and Bed**  
by bassamanator

## Model files



**trianglelabsadxl\_mount.step**

☐ Geometry only



**hollow\_trianglelabsadxl\_mount.step**

☐ Geometry only

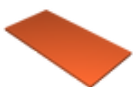


**trianglelabsadxl\_mount.3mf**



**hollow\_trianglelabsadxl\_mount.3mf**

☐ lightweight version



**bed\_spacer.3mf**

☐ use when mounting to bed, from bassamanator

# License

This work is licensed under a  
**Creative Commons (4.0 International License)**



**Attribution—Noncommercial—Share Alike**

---

- ✗ | Sharing without ATTRIBUTION
- ✓ | Remix Culture allowed
- ✗ | Commercial Use
- ✗ | Free Cultural Works
- ✗ | Meets Open Definition