

# Organization Bracket with Various Hooks - Closet Organization Hangers - 3030 T-Track Compatible Bracket



trose

[VIEW IN BROWSER](#)

updated 9. 10. 2023 | published 9. 10. 2023

## Summary

This is a multi-purpose bracket that utilizes standard t-slot nuts and M3 hardware for 3030 extrusions. Includes hooks.

[Hobby & Makers](#) > [Organizers](#)

Tags: [organizer](#) [hook](#) [3030](#) [belt](#) [storage](#) [closet](#) [organization](#) [tslot](#) [accessories](#) [clothing](#) [hooks](#) [mens](#) [ties](#) [womens](#)

Our walk-in closet has a lot of closet-rod hanging space, but not a lot of space for odd accessories, belts, ties, etc. I wanted to build a hook system that was very compact, standardized to be used in other places or easily remixed in the future if desired, and simple.

This is a simple low-profile bracket that can be mounted to the wall using double-sided tape (i.e. 3M strips) or via fasteners - countersunk holes are included.

Pairs well with t-slot nut-serts from printables — I used these [3030 M3 drop-in nuts](#) from [TC | Printables.com](#).

I printed with PETG for the strength and longevity of the parts. Fit was good for my prints, but if it's snug for yours, you can sand/file or adjust via provided CAD files.

Tip: I've included an “extension block” part. You can print that to use as a guide to place two brackets side-by-side and keep them in temporary alignment until they are mounted.

## Model files



**3MF**

1 file



**t-track-wall-mount-6in-v2.3mf**



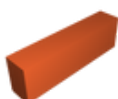
**STL**

6 files



**t-track-wall-mount-6in-v2.stl**

☐ main bracket



**extension\_block\_v1.stl**

☐ temporary use for aid in alignment when installing multiple brackets



**belt\_hook\_10mm\_prongs\_v1.stl**

☐ standard version, but split on end for belts with a knob/pin



### **belt\_hook\_10mm\_v1.stl**

☐ standard hook



### **tie\_hook\_v2.stl**

☐ thin belts, ties, etc.



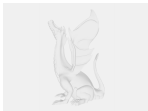
### **belt\_hook\_20mm\_v1.stl**

☐ deeper version of standard hook



## **NATIVE CAD**

6 files



### **t-track-wall-mount-6in-v2.sldprt**



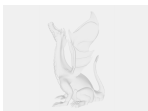
### **belt\_hook.sldprt**



### **extension\_block.sldprt**



### **tie\_hook\_single40mm.sldprt**



### **belt\_webbing\_hook.sldprt**



### **tie\_hook.sldprt**

# License

This work is licensed under a  
**Creative Commons (4.0 International License)**



**Attribution—Noncommercial—Share Alike**

---

- ✗ | Sharing without ATTRIBUTION
- ✓ | Remix Culture allowed
- ✗ | Commercial Use
- ✗ | Free Cultural Works
- ✗ | Meets Open Definition