

3D MODEL ONLY

# IKEA VARIERA Shelf riser

 **harry48225**[VIEW IN BROWSER](#)

updated 8. 10. 2023 | published 8. 10. 2023

## Summary

Adds 5cm of height

[Household](#) > [Kitchen](#)

Tags: [shelf](#) [ikea](#) [shelfsupport](#) [variera](#)

The IKEA VARIERA shelf isn't quite tall enough for me.  
This spacer adds about 5cm of height and a cool ironworks inspired pattern.

Materials required:

- Print 2x of the riser
- Original screws
- 6x M3x4 (longer would probably work) screws

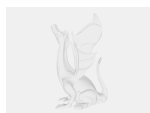
Installation:

- Remove shelf legs
- Screw the spacer into the platform - check orientation with photos (but really the screws will only fit one way)
- Screw the legs into the spacers

Notes on printing:

I printed on a prusa mini+ with 0.2mm layer height on speed quality setting. I don't think that this part will be sensitive to print settings.

## Model files



riser.amf

## License ©

This work is licensed under a  
[Creative Commons \(4.0 International License\)](#)



### Attribution

---

- ✗ | Sharing without ATTRIBUTION
- ✓ | Remix Culture allowed
- ✓ | Commercial Use
- ✓ | Free Cultural Works
- ✓ | Meets Open Definition