

The Warden



Jakey

[VIEW IN BROWSER](#)

updated 24. 3. 2021 | published 20. 3. 2021

Summary

Exactly what it sounds like. (The upcoming scary minecraft mob)



12.88 hrs



6 pcs



0.20 mm



0.40 mm



PLA



109 g



Prusa
MK3/S/S+

[Household](#) > [Home Decor](#)

Tags: [minecraft](#) [minecraft Creeper](#) [minecraft Warden](#)

My take on the upcoming Minecraft warden mob. I wanted as many different colors and details as possible, but since I don't have an MMU, I had to get creative with the design. The resulting print is pretty small (roughly 12.5 cm tall), and there are A LOT of parts, but the result is sick.

Special thanks to DEVU (u/DevuXD) for his texture recreation of the warden which helped me model the back of the warden.

This model is also available on Thingiverse: <https://www.thingiverse.com/thing:4800632/files>

Assembly should be pretty straight forward, but if not, the following pictures should provide hints:

Tools Required: precision knife to clean off parts for better fit. Super glue can be useful if you want a more permanent connection.

NOTE: Every single model (stl) needs printed at least 1x. But the following files need printed multiple times:

MiniLeg Blue MT.stl (2x)

Mini Leg.stl (2x)

Mini Toes MT.stl (2x)

Arm Pivot -.1.stl (2x)

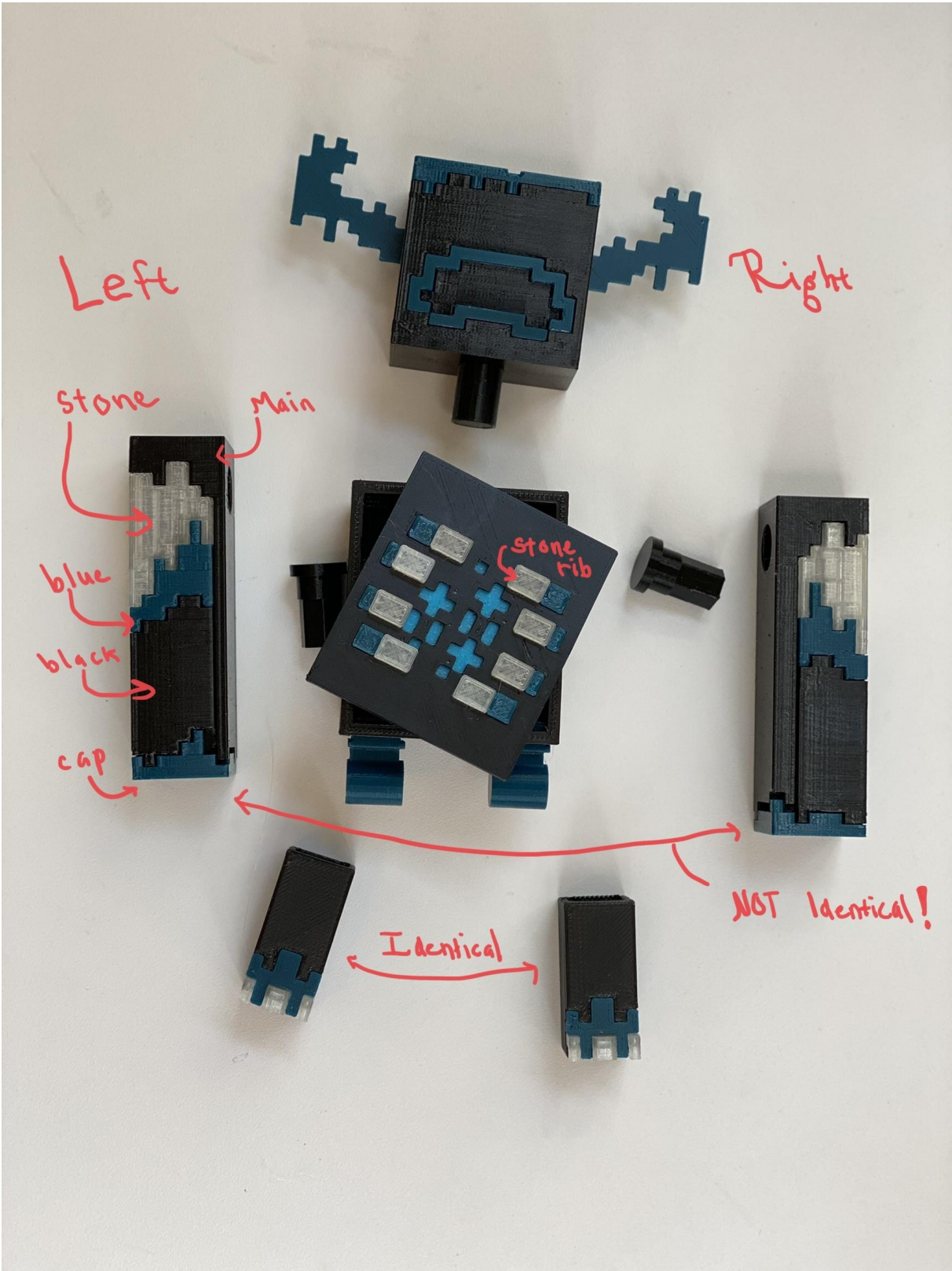
Leg Hinge B type 2 -.127 lower and upper.stl (2x)

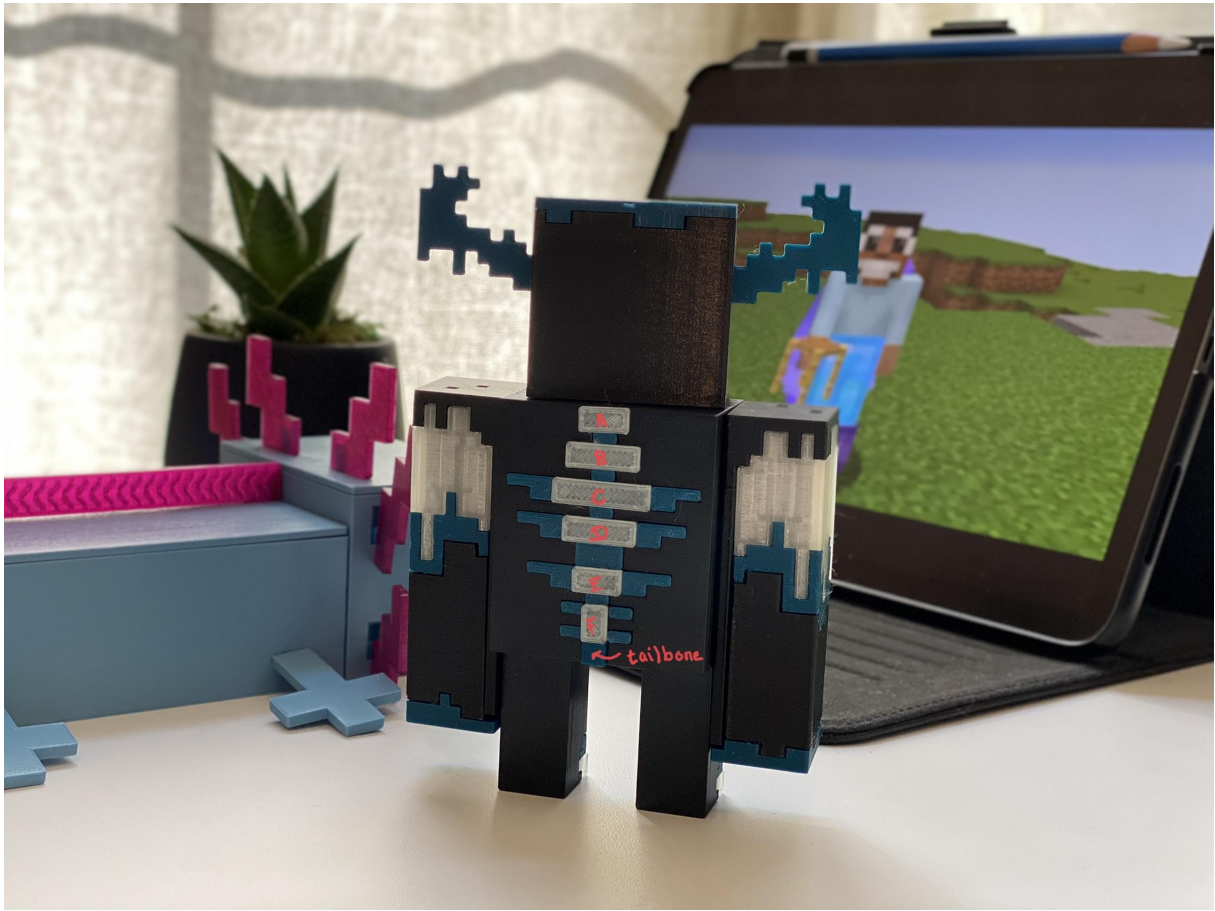
StoneRib MT -.1.stl (8x)

Mini Blue Rib.stl (2x)

ALSO: be careful with fragile parts especially in the Arm segments.

ALSOx2: this thing might be a pain to print . . . good luck

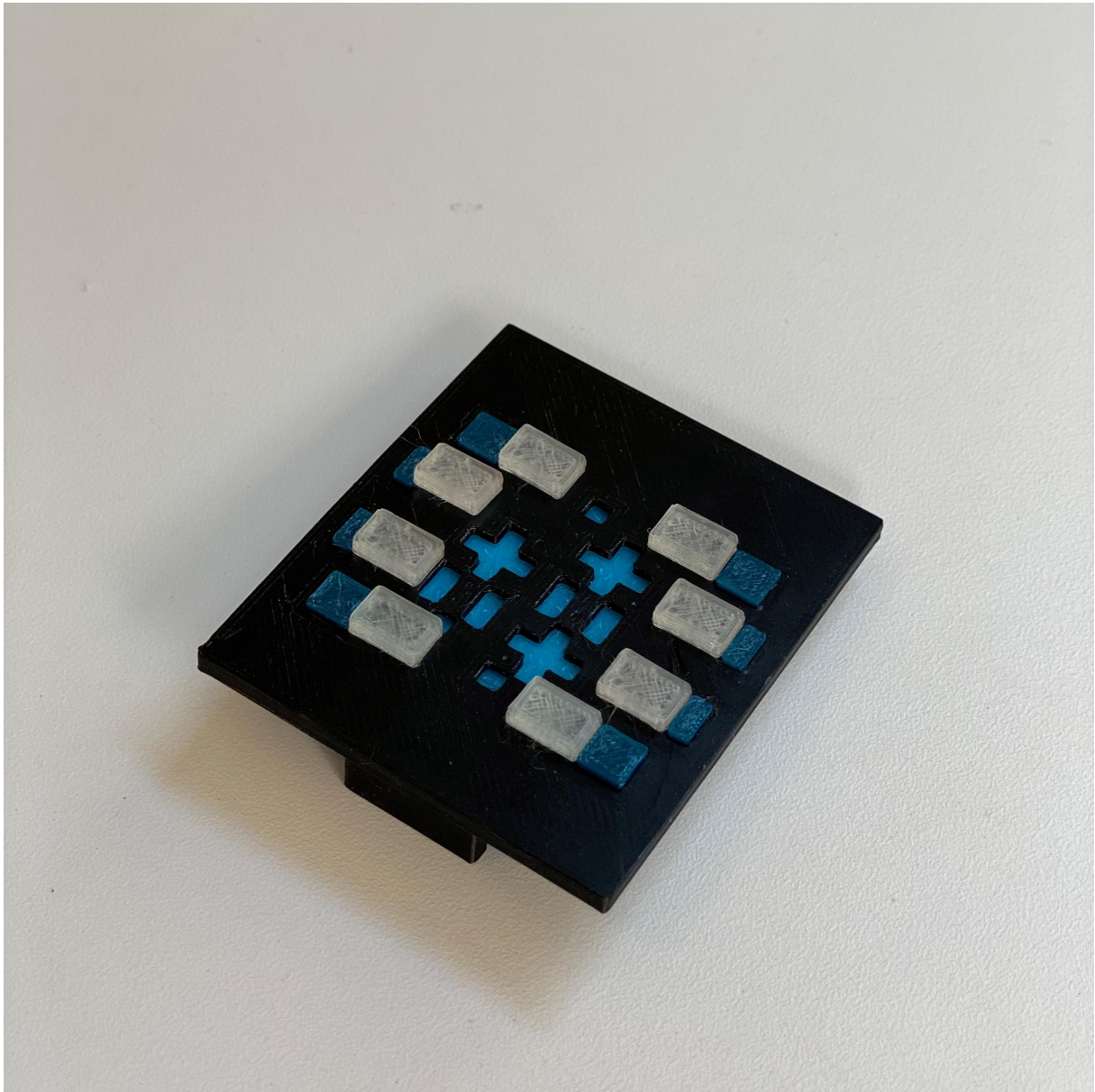




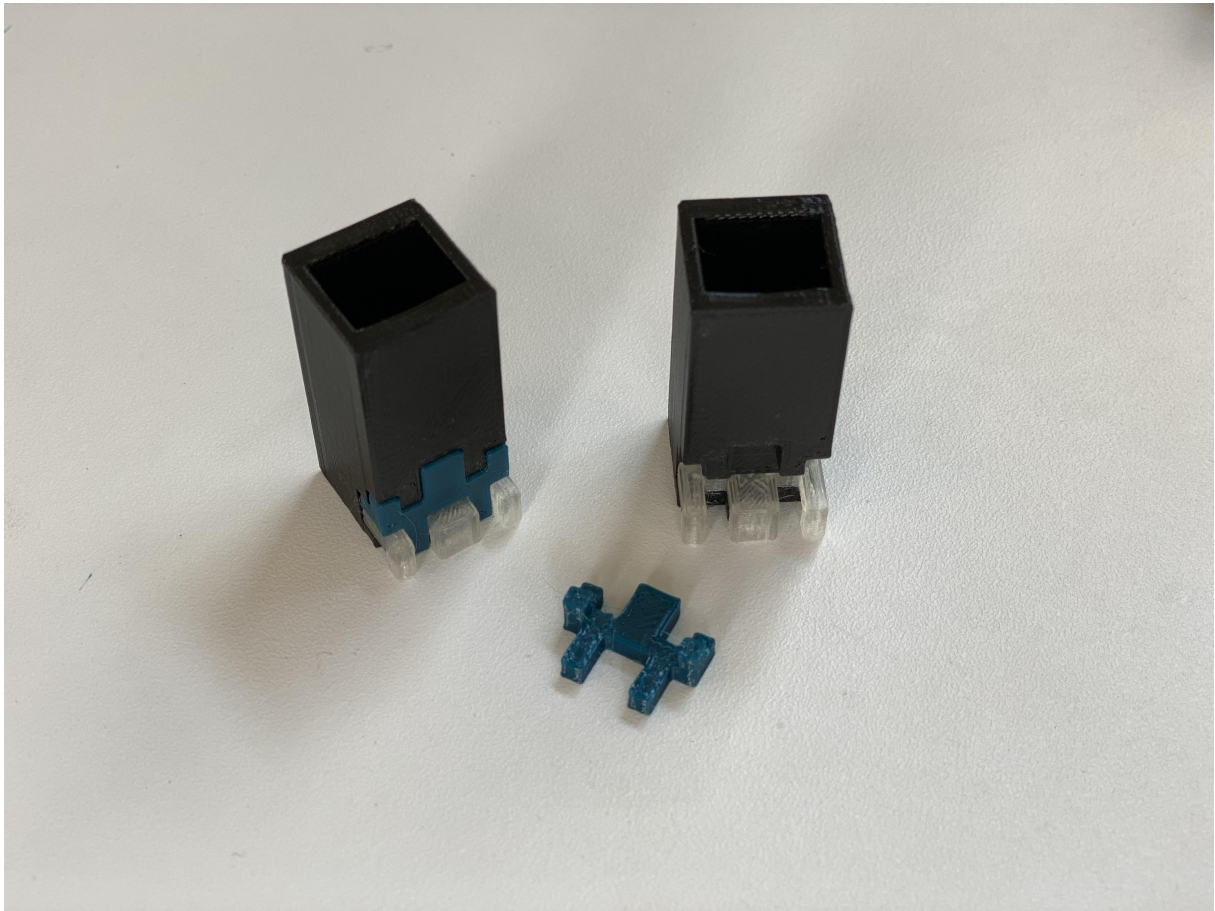
The Legs: note that Left and Right are not identical.



The body cover: small parts push from the inside to the outside.



The two feet are identical:



Model files

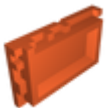


Head

6 files



mini-head.stl



mini-head-cap.stl



mouth-upper-mt.stl



mouth-lower-mt.stl



mini-ear-l-flat.stl

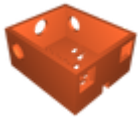


mini-ear-r-flat.stl

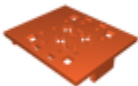


Body

13 files



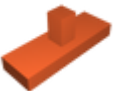
mini-body.stl



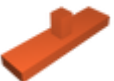
mini-bridged-body-cover.stl



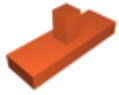
spine-a.stl



spine-b.stl



spine-c.stl



spine-d.stl



spine-e.stl



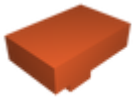
spine-f.stl



mini-blue-spine-upper.stl



mini-blue-spine-tailbone.stl

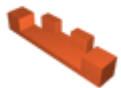


stone-rib-mt-1.stl

☐ 8x



blue-souls-mt-1.stl



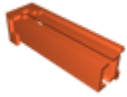
mini-blue-rib.stl

☐ 2x



Left Arm

5 files



left-arm-main.stl

☐ Black



left-arm-stone.stl



left-arm-blue.stl



left-arm-black.stl

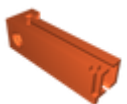


left-arm-blue-cap-mt-1.stl



Right Arm

5 files



right-arm-main.stl

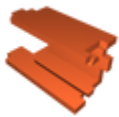
☐ Black



right-arm-stone.stl



right-arm-blue.stl



right-arm-black.stl



right-arm-blue-cap-mt-1.stl



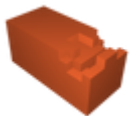
Legs

3 files



mini-leg-blue-mt.stl

☐ 2x



mini-leg.stl

☐ 2x



mini-toes-mt.stl

☐ 2x



All Connectors

4 files



arm-pivot-1.stl

☐ 2x

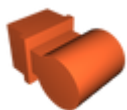


final-simple-head-pivot-05.stl



simple-head-pivot-washer-05.stl

☐ optional, mainly functions as a cap to prevent head from falling off



leg-hinge-b-type-2-127-lower-and-upper.stl

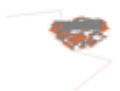
☐ 2x

Print files



all-stone-details_02mm_pla_mk3s_1h34m.gcode

⚙ PLA ⚙ 0.40 mm ≡ 0.20 mm ⌚ 1.57 hrs ⚖ 10 g 🖨 Prusa MK3/S/S+



all-blue-details-minus-souls_02mm_pla_mk3s_2h36.gcode

⚙ PLA ⚙ 0.40 mm ≡ 0.20 mm ⌚ 2.60 hrs ⚖ 19 g 🖨 Prusa MK3/S/S+



arms-and-legs_02mm_pla_mk3s_4h25m.gcode

⚙ PLA ⚙ 0.40 mm ≡ 0.20 mm ⌚ 4.42 hrs ⚖ 38 g 🖨 Prusa MK3/S/S+



blue-souls-mt-1_02mm_pla_mk3s_9m.gcode

⚙ PLA ⚙ 0.40 mm ≡ 0.20 mm ⌚ 0.16 hrs ⚖ 1 g 🖨 Prusa MK3/S/S+



head-body-plus-cover_02mm_pla_mk3s_3h24m.gcode

⚙ PLA ⚙ 0.40 mm ≡ 0.20 mm ⌚ 3.40 hrs ⚖ 35 g 🖨 Prusa MK3/S/S+



all-connectors_02mm_pla_mk3s_44m.gcode

⚙ PLA ⚙ 0.40 mm ≡ 0.20 mm ⌚ 0.73 hrs ⚖ 6 g 🖨 Prusa MK3/S/S+

License

This work is licensed under a
Creative Commons (4.0 International License)



Attribution-NonCommercial

- ✗ | Sharing without ATTRIBUTION
- ✓ | Remix Culture allowed
- ✗ | Commercial Use
- ✗ | Free Cultural Works
- ✗ | Meets Open Definition