

Slim Riser for Camera Mount for Prusa Mini to place besides Raspberry Enclosure



MariusT

[VIEW IN BROWSER](#)

updated 21. 11. 2022 | published 21. 11. 2022

Summary

This is a small riser to be able to use the camera mount from Seabird HH and the great RPi case from Joe



0.24 hrs



1 pcs



0.20 mm



0.40 mm



PLA



2 g



Prusa MINI /
MINI+

[3D Printers](#) > [3D Printers - Upgrades](#)

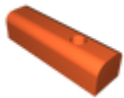
Tags: [cameramount](#) [raspberrypi](#) [riser](#)

This is a neat little riser to be able to use the [Prusa Mini Raspberry Pi Camera Mount](#) from Seabird HH and the great and highly compact [Prusa MINI Raspberry Pi Case](#) from Joe.

Normally these two parts cannot be placed besides each other. Even with the riser it is a tight fit but it works (the riser has to be mounted first, then the RPi case).

The riser can be mounted with a M4 screw and **T-Nut** (I used M4x16) and the top screw is a M3 screw for the Raspberry Pi Camera Mount System. The M3 is secured with a ruthex Brass insert (4mm diameter in the plastic). If there is demand I can surely release a version with a smaller hole so that anybody can cut their own threads.

Model files



riser_for_prusa_mini_rpi_camera_mount.stl

Print files



riser_for_prusa_mini_rpi_camera_mount_02mm_pla_.gcode

PLA 0.40 mm 0.20 mm 0.24 hrs 2 g Prusa MINI / MINI+

License

This work is licensed under a **Creative Commons (4.0 International License)**



Attribution

-
- ✗ | Sharing without ATTRIBUTION
 - ✓ | Remix Culture allowed
 - ✓ | Commercial Use
 - ✓ | Free Cultural Works
 - ✓ | Meets Open Definition