

Castlevania Belmont family crest



Dom Lamberti

[VIEW IN BROWSER](#)

updated 8. 10. 2023 | published 8. 10. 2023

Summary

a square plaque with a raised section of the Belmont family crest.



1.57 hrs



1 pcs



0.20 mm



0.60 mm



PLA



31 g



Prusa MINI /
MINI+

[Art & Design](#) > [2D Plates & Logos](#)

Tags: [castlevania](#) [netflixscastlevania](#)

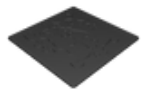
After watching Castlevania Nocturne, and then rewatching the first 4 seasons of the magnificence that is Netflix's Castlevania, I went to print off a belmont family plaque to have on my wall, only to find there really weren't any? which was weird, so I made this one.

I found a clean PNG of the belmont crest, brought it into inkscape, did "trace bitmap" fiddled about until I liked the look of it , saved as SVG, then brought it into Fusion 360 where i'd created a square with rounded off corners and extruded to a height that looked good.

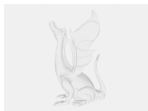
when bought into prusaslicer it auto did the “hey this looks like a logo, shall I do a colour swap?” ignore it, it put the colour swap about halfway up the belmont crest instead of the first layer of it.

Included Gcode is 0.6mm nozzle and 0.2mm layers because my prusa mini has a 0.6mm nozzle in it and prusa slicer with multiple nozzles on the same printer is a pain in the ass.

Model files



belmont-crest-v1.3mf



belmont-crest-v1.f3d

Print files



belmont-crest-v1_06n_02mm_pla_mini_1h34m.gcode

🌀 PLA 📏 0.60 mm 📐 0.20 mm ⌚ 1.57 hrs ⚖️ 31 g 🖨️ Prusa MINI / MINI+

License ©

This work is licensed under a
[Creative Commons \(International License\)](#)



Public Domain

-
- ✓ | Sharing without ATTRIBUTION
 - ✓ | Remix Culture allowed
 - ✓ | Commercial Use

- ✓ | Free Cultural Works
- ✓ | Meets Open Definition