



E3D toolchanger rear cover



Colin Alston

[VIEW IN BROWSER](#)

updated 20. 3. 2021 | published 20. 3. 2021

Summary

Cover the unsightly hole in the rear panel for unused bowden tools

[3D Printers](#) > [3D Printers - Upgrades](#)

Tags: [toolchanger](#)

The new TC has a square hole for a Bowden setup option, but you're left with an unsightly hole when using direct drive. So as my first multi material print I made this blank plate with the E3D logo on it to cover the holes.

Included are also single and double wide blanks with STEP files if you want to make your own design.

I'm not sure how to provide a sliceable combination model, I just manually dragged the inset pieces into place as they have a 0.1mm tolerance on them (which also means you could print this without a TC and just sort of glue it back together).

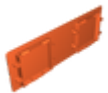
Model files



einsert.stl



single-blank.stl



e3dbadge.stl



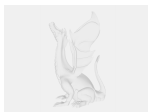
ecog.stl



double-blank.stl



dinsert.stl



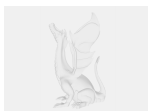
single-blank.step



double-blank.step



3dcog.stl



e3dbadge.step

License ©

This work is licensed under a
BSD License



-
- ✗ | Sharing without ATTRIBUTION
 - ✓ | Remix Culture allowed
 - ✓ | Commercial Use
 - ✓ | Free Cultural Works
 - ✓ | Meets Open Definition