



## Solar lampion/ lantern handle replacement

**b** beerwema

[VIEW IN BROWSER](#)

updated 8. 10. 2023 | published 8. 10. 2023

### Summary

This handle can be used to replace a broken handle on a solar lantern.



0.85 hrs



2 pcs



0.15 mm



0.40 mm



PLA  
PET



7 g



Prusa MINI /  
MINI+

[Household](#) > [Outdoor & Garden](#)

Tags: [light](#) [lamp](#) [garden](#) [lantern](#) [repair](#) [balcony](#) [solar](#)  
[lampion](#)

This is a replacement handle for solar lanterns. These types of lanterns can often be found in home improvement or dollar stores and they can be hanged on a wall or railing with the included handle and hook. I have two of these lamps, but unfortunately the handles broke after around a year of use, despite the lamps working flawlessly. So I decided to design a replacement and print it.

The handle is designed for lamps which have a diameter of around 7 cm at the top (see pictures with ruler for reference). The top needs to have two holes on either side where the two pins can be pushed through. The holes

should have a diameter a bit below 3,9 mm to allow for a press fit, since the balls at the end of the pins have a diameter of 3,9 mm.

I printed the handle in PLA, but in hindsight it would have been better to print it with PETG or ABS, since it warped a bit due to higher temperatures in the summer. This is also why I did not include an actual picture of the handle itself, since it would not represent the model well. Still, the print in PLA is lasting me since two years, so if you have nothing better on hand you can give it a shot. Keep in mind that I am located in Germany where the summers are not as hot as, lets say, in Texas. If you live in a warmer area the PLA will probably not last long.

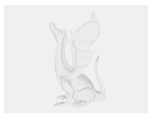
I included the FreeCAD .fcstd file as well in case you want to make changes or adopt it to a smaller/bigger lantern. For printing I would recommend enabling supports on the build plate to make sure the pins come out with decent quality. For the layer height, .15 or even .2 is sufficient.

Happy printing and fixing :-)

## Model files



**solar-lantern-handle.stl**



**solar-lantern-handle.fcstd**

## Print files



**solar-lantern-handle\_015mm\_petg\_mini\_26m.gcode**

🌀 PET 🌀 0.40 mm ≡ 0.15 mm ⌚ 0.43 hrs ⚖️ 3 g 🖨️ Prusa MINI / MINI+



**solar-lantern-handle\_015mm\_pla\_mini\_25m.gcode**

🌀 PLA 🌀 0.40 mm ≡ 0.15 mm ⌚ 0.42 hrs ⚖️ 3 g 🖨️ Prusa MINI / MINI+

# License

This work is licensed under a  
**Creative Commons (4.0 International License)**



**Attribution-ShareAlike**

---

- ✗ | Sharing without ATTRIBUTION
- ✓ | Remix Culture allowed
- ✓ | Commercial Use
- ✓ | Free Cultural Works
- ✓ | Meets Open Definition