



XY6020L enclosure



avolkov

[VIEW IN BROWSER](#)

updated 7. 11. 2023 | published 7. 11. 2023

Summary

Housing for XY6020L DC Voltage converter

[Hobby & Makers](#) > [Electronics](#)

Tags: [enclosure](#) [openscad](#) [electronicsbox](#) [xy6020l](#) [xy6020](#)

I created a basic housing model for the XY6020L DC-DC converter. I came across the XY6020L adapter on the GreatScott! YouTube channel and decided to get one.

don't have a home lab, so having a portable housing for the device is incredibly useful for me, especially when I need the converter to trickle charge a car battery for a couple of days

BOM

Attaching the board to the tray:

4x M3x10mm bolts

4x M3 Nuts

Attaching the tray to the housing

4x M2x6mm bolts

4x M2 nuts

Print Settings

Minimum print settings: 15% infill and 2 layers everywhere. This will result in something workable.

Use more top and bottom layers to improve part quality.

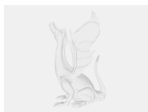
Revision 1

Clips holding M2 nuts are now connected to the bottom of the tray, and not hanging off the alignment lip. Thank you @Siff@mstdn.social

Model files



hardware.scad



xy6020l_housing.scad



xy6020l_tray.stl



xy6020l_housing.stl

License

This work is licensed under a
[Creative Commons \(4.0 International License\)](https://creativecommons.org/licenses/by-sa/4.0/)



Attribution-ShareAlike

- ✗ | Sharing without ATTRIBUTION
- ✓ | Remix Culture allowed
- ✓ | Commercial Use
- ✓ | Free Cultural Works
- ✓ | Meets Open Definition