

## Filamentbox Connector M10 PTFE



**Tim Jürgens**

[VIEW IN BROWSER](#)

updated 8. 10. 2023 | published 8. 10. 2023

### Summary

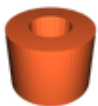
A Connector for Box Walls using a M10 PTFE Connector.

[3D Printers](#) > [Accessories](#)

Tags: [drybox](#) [ptfecoupler](#)

Box Connector M10 PTFE and a disc for in and outside the wall of the box.

### Model files



**mutter-ptfe-m10.stl**



**uscheibe-ptfe.stl**

# License ©

This work is licensed under a  
**Creative Commons (4.0 International License)**



## **Attribution-NonCommercial**

---

- ✗ | Sharing without ATTRIBUTION
- ✓ | Remix Culture allowed
- ✗ | Commercial Use
- ✗ | Free Cultural Works
- ✗ | Meets Open Definition