

Bambu Stealthburner Rear Tap Support

 JKtech

[VIEW IN BROWSER](#)

updated 15. 10. 2023 | published 15. 10. 2023

Summary

Remixed the rear portion of the Bambu stealthburner for stock bambu hotend to support tap

[3D Printers](#) > [Voron Parts & Upgrades](#)

Modified the original design to support the use of Voron tap

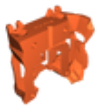
This remix is based on



Bambu stealthburner for stock bambu hotend

by John

Model files



bambu_stealthburner_rear_tap.stl

License

This work is licensed under a
[Creative Commons \(International License\)](#)



Public Domain

-
- ✓ | Sharing without ATTRIBUTION
 - ✓ | Remix Culture allowed
 - ✓ | Commercial Use
 - ✓ | Free Cultural Works
 - ✓ | Meets Open Definition