

Dial Indicator Case



Myh3adhur7s

[VIEW IN BROWSER](#)

updated 8. 10. 2023 | published 8. 10. 2023

Summary

A simple case for your 1in dial indicator. This on includes designs for ones with magnet back or a lug back. Modified...

[Hobby & Makers](#) > [Tools](#)

Tags: [dialindicator](#) [thingiverse](#) [cncmachine](#) [millingmachine](#)

A simple case for your 1in dial indicator. This on includes designs for ones with magnet back or a lug back. Modified from the original to use two M2.5 x 12mm socket head cap screw for the hinges and a deeper bottom for mag back indicators and deeper top for indicators with a doomed glass face. I would recommend running a tap thru to help prevent breaking the hinges during assembly.

Print Settings

Printer Brand:

Bambulabs

Printer:

Bambu X1C

Rafts:

No

Supports:

No

Resolution:

.02

Infill:

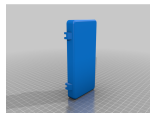
5%

Filament: Polymaker ASA Post-Printing =====

Recommend running a tap thru the top hinges to help reduce risk of cracking

Category: Tool Holders & Boxes

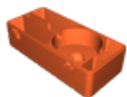
This remix is based on



Dial Indicator Case

by scootarida1

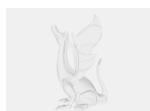
Model files



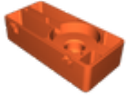
mag_back_indicator_bottom.stl



indicator_case_top.stl



dial_indicator_holder.3mf



lug_back_indicator_bottom.stl

[Find source .stl files on Thingiverse.com](#)

License ©

This work is licensed under a
Creative Commons (4.0 International License)



Attribution-ShareAlike

-
- ✗ | Sharing without ATTRIBUTION
 - ✓ | Remix Culture allowed
 - ✓ | Commercial Use
 - ✓ | Free Cultural Works
 - ✓ | Meets Open Definition