



Signs Of The Zodiac - Key Chain, Key Ring, Key Tag

 **D3DCreative**

[VIEW IN BROWSER](#)

updated 11. 10. 2023 | published 11. 10. 2023

Summary

The 12 signs of the Zodiac Key Chain - What's your Birth Sign?



0.90 hrs



24 pcs



0.15 mm



0.40 mm



PLA



7 g



Prusa
MK3/S/S+

[Fashion](#) > [Other Fashion Accessories](#)

Tags: [keychain](#) [keyring](#) [astrology](#) [zodiac](#) [astrologysigns](#)
[horoscope](#) [zodiackeychain](#) [zodiacsymbols](#) [keytags](#) [starsign](#)
[celestialbodies](#) [birthsignkeychain](#) [starsignkeychain](#)
[astrologykeychain](#) [birthsignkeyring](#) [astrologykeyring](#)
[starsignskeyring](#) [zodiacsignkeyring](#) [zodiackeyring](#) [zodiacdates](#)
[zodiackeytags](#) [starsymbols](#) [zodiacsigns](#) [birthsymbols](#)
[birthsign](#) [zodiacsignkeychain](#) [birthdates](#)

A full set of 12 Zodiac KeyChains

Recommended print settings: .15 layer height, 15% infill, Ironing On, Ironing Type - Topmost surface only.

At .15 layer height manual colour change is at 4.10 mm.

Two GCODE versions included, with and without colour swap at layer height. All have Ironing On.

If you have a Prusa MK3/MK4 you can get all 12 keychains on the build plate.

For those with multi-colour option then just print inner zodiac sign a different colour.

Designed by me - D3D Creative.

Designed in metric units, adjust in your slicer accordingly.

Please post pics of your finished model, give it a rating and kindly show us your prints.



Buy me a coffee

I try to keep all my designs free & don't wish to move to Printables Clubs, a small donation via my Buy Me a Coffee would be kindly appreciated.

All my designs and images used are not commercial free and are copyright of ©D3DCreative

By downloading my models you may not share any of the Images/STLs/ GCode etc to any other persons or platforms e.g. thingiverse/makerworld

By downloading my work you agree to the above terms set out by me.

Model files

aries.stl





taurus.stl



gemini.stl



cancer.stl



leo.stl



virgo.stl



libra.stl



scorpio.stl



sagittarius.stl



capricorn.stl



aquarius.stl



pisces.stl

Print files



aries_015mm_pla_mk3s_52m.gcode

🌀 PLA 📏 0.40 mm ⚖️ 0.15 mm ⌚ 0.87 hrs ⚖️ 7 g 🖨️ Prusa MK3/S/S+



aries_colourswap_015mm_pla_mk3s_52m.gcode

🌀 PLA 📏 0.40 mm ⚖️ 0.15 mm ⌚ 0.87 hrs ⚖️ 7 g 🖨️ Prusa MK3/S/S+



taurus_015mm_pla_mk3s_54m.gcode

🌀 PLA 📏 0.40 mm ⚖️ 0.15 mm ⌚ 0.90 hrs ⚖️ 7 g 🖨️ Prusa MK3/S/S+



taurus_colourswap_015mm_pla_mk3s_54m.gcode

🌀 PLA 📏 0.40 mm ⚖️ 0.15 mm ⌚ 0.90 hrs ⚖️ 7 g 🖨️ Prusa MK3/S/S+



gemini_015mm_pla_mk3s_54m.gcode

🌀 PLA 📏 0.40 mm ⚖️ 0.15 mm ⌚ 0.90 hrs ⚖️ 7 g 🖨️ Prusa MK3/S/S+



gemini_colourswap_015mm_pla_mk3s_54m.gcode

🌀 PLA 📏 0.40 mm ⚖️ 0.15 mm ⌚ 0.90 hrs ⚖️ 7 g 🖨️ Prusa MK3/S/S+



cancer_015mm_pla_mk3s_57m.gcode

🌀 PLA 📏 0.40 mm ⚖️ 0.15 mm ⌚ 0.95 hrs ⚖️ 7 g 🖨️ Prusa MK3/S/S+



cancer_colourswap_015mm_pla_mk3s_57m.gcode

🌀 PLA 🌀 0.40 mm ≡ 0.15 mm ⌚ 0.95 hrs ⚖️ 7 g 🖨️ Prusa MK3/S/S+



leo_015mm_pla_mk3s_58m.gcode

🌀 PLA 🌀 0.40 mm ≡ 0.15 mm ⌚ 0.97 hrs ⚖️ 7 g 🖨️ Prusa MK3/S/S+



leo_colourswap_015mm_pla_mk3s_58m.gcode

🌀 PLA 🌀 0.40 mm ≡ 0.15 mm ⌚ 0.97 hrs ⚖️ 7 g 🖨️ Prusa MK3/S/S+



virgo_015mm_pla_mk3s_53m.gcode

🌀 PLA 🌀 0.40 mm ≡ 0.15 mm ⌚ 0.89 hrs ⚖️ 7 g 🖨️ Prusa MK3/S/S+



virgo_colourswap_015mm_pla_mk3s_53m.gcode

🌀 PLA 🌀 0.40 mm ≡ 0.15 mm ⌚ 0.89 hrs ⚖️ 7 g 🖨️ Prusa MK3/S/S+



libra_015mm_pla_mk3s_51m.gcode

🌀 PLA 🌀 0.40 mm ≡ 0.15 mm ⌚ 0.85 hrs ⚖️ 7 g 🖨️ Prusa MK3/S/S+



libra_colourswap_015mm_pla_mk3s_51m.gcode

🌀 PLA 🌀 0.40 mm ≡ 0.15 mm ⌚ 0.85 hrs ⚖️ 7 g 🖨️ Prusa MK3/S/S+



scorpio_015mm_pla_mk3s_54m.gcode

🌀 PLA 🌀 0.40 mm ≡ 0.15 mm ⌚ 0.89 hrs ⚖️ 7 g 🖨️ Prusa MK3/S/S+



scorpio_colourswap_015mm_pla_mk3s_54m.gcode

🌀 PLA 🌀 0.40 mm ≡ 0.15 mm ⌚ 0.89 hrs ⚖️ 7 g 🖨️ Prusa MK3/S/S+



sagittarius_015mm_pla_mk3s_54m.gcode

🌀 PLA 🌀 0.40 mm ≡ 0.15 mm ⌚ 0.91 hrs ⚖️ 7 g 🖨 Prusa MK3/S/S+



sagittarius_colourswap_015mm_pla_mk3s_54m.gcode

🌀 PLA 🌀 0.40 mm ≡ 0.15 mm ⌚ 0.91 hrs ⚖️ 7 g 🖨 Prusa MK3/S/S+



capricorn_015mm_pla_mk3s_50m.gcode

🌀 PLA 🌀 0.40 mm ≡ 0.15 mm ⌚ 0.83 hrs ⚖️ 7 g 🖨 Prusa MK3/S/S+



capricorn_colourswap_015mm_pla_mk3s_50m.gcode

🌀 PLA 🌀 0.40 mm ≡ 0.15 mm ⌚ 0.83 hrs ⚖️ 7 g 🖨 Prusa MK3/S/S+



aquarius_015mm_pla_mk3s_52m.gcode

🌀 PLA 🌀 0.40 mm ≡ 0.15 mm ⌚ 0.87 hrs ⚖️ 7 g 🖨 Prusa MK3/S/S+



aquarius_colourswap_015mm_pla_mk3s_52m.gcode

🌀 PLA 🌀 0.40 mm ≡ 0.15 mm ⌚ 0.87 hrs ⚖️ 7 g 🖨 Prusa MK3/S/S+



pisces_015mm_pla_mk3s_55m.gcode

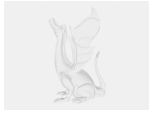
🌀 PLA 🌀 0.40 mm ≡ 0.15 mm ⌚ 0.91 hrs ⚖️ 7 g 🖨 Prusa MK3/S/S+



pisces_colourswap_015mm_pla_mk3s_55m.gcode

🌀 PLA 🌀 0.40 mm ≡ 0.15 mm ⌚ 0.91 hrs ⚖️ 7 g 🖨 Prusa MK3/S/S+

Other files



zodiac-signs.pdf

License



This work is licensed under a
Creative Commons (4.0 International License)

Attribution-ShareAlike

-
- ✗ | Sharing without ATTRIBUTION
 - ✓ | Remix Culture allowed
 - ✓ | Commercial Use
 - ✓ | Free Cultural Works
 - ✓ | Meets Open Definition