

## Pump Hose Adapter for AeonAir/Whirlpool/Idylis Dehumidifiers

A Adam

[VIEW IN BROWSER](#)

updated 8. 10. 2023 | published 8. 10. 2023

### Summary

Replacement for the plastic piece that connects several brands of dehumidifier to the plastic hose used to drain them.

[Household](#) > [Other House Equipment](#)

Tags: [rdh70edp](#) [rpac13eap](#) [wdh70eapw](#) [wdh1670ea1](#)  
[rdh70eapb](#)

The original design of this plastic adapter that connects the dehumidifier to a drain hose is somewhat fragile and subject to wearing out over time. Newer versions of this part are more sturdy, but don't fit older models; and replacement kits (which include the hose) run upwards of \$40 each.

This is a replacement part that should get you up and running again.

The model number of the replacement part that you'll find online is "VB015PF5.5-5000," and it's listed to work with the following units:

- Whirlpool WDH70EAPW
- Idylis WDH1670EA1

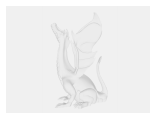
- AeonAir RDH70EDP
- AeonAir RDH70EAPB
- AeonAir RPAC13EAP

## Printing

You will need to print this with supports.

Because this part is in nearly constant contact with water, you don't want to use PLA except as a short-term solution. I printed mine out of PETG with the layer adhesion dialed in really well (you don't want this to break off inside the dehumidifier). It probably works well in ABS as well, as long as you can avoid warping.

## Model files



dehumidifier-pump-drain-v2.scad



dehumidifier-pump-drain-v2.stl

## License ©

This work is licensed under a  
[Creative Commons \(4.0 International License\)](#)



**Attribution-ShareAlike**

- 
- ✗ | Sharing without ATTRIBUTION
  - ✓ | Remix Culture allowed
  - ✓ | Commercial Use
  - ✓ | Free Cultural Works
  - ✓ | Meets Open Definition

