



Washing Machine Door

 **GregE**

[VIEW IN BROWSER](#)

updated 11. 10. 2023 | published 11. 10. 2023

Summary

Replacement washing machine door.

[Household](#) > [Other House Equipment](#)

Problem: Broken Door Surround - Bosch washing machine model WAE20260AU

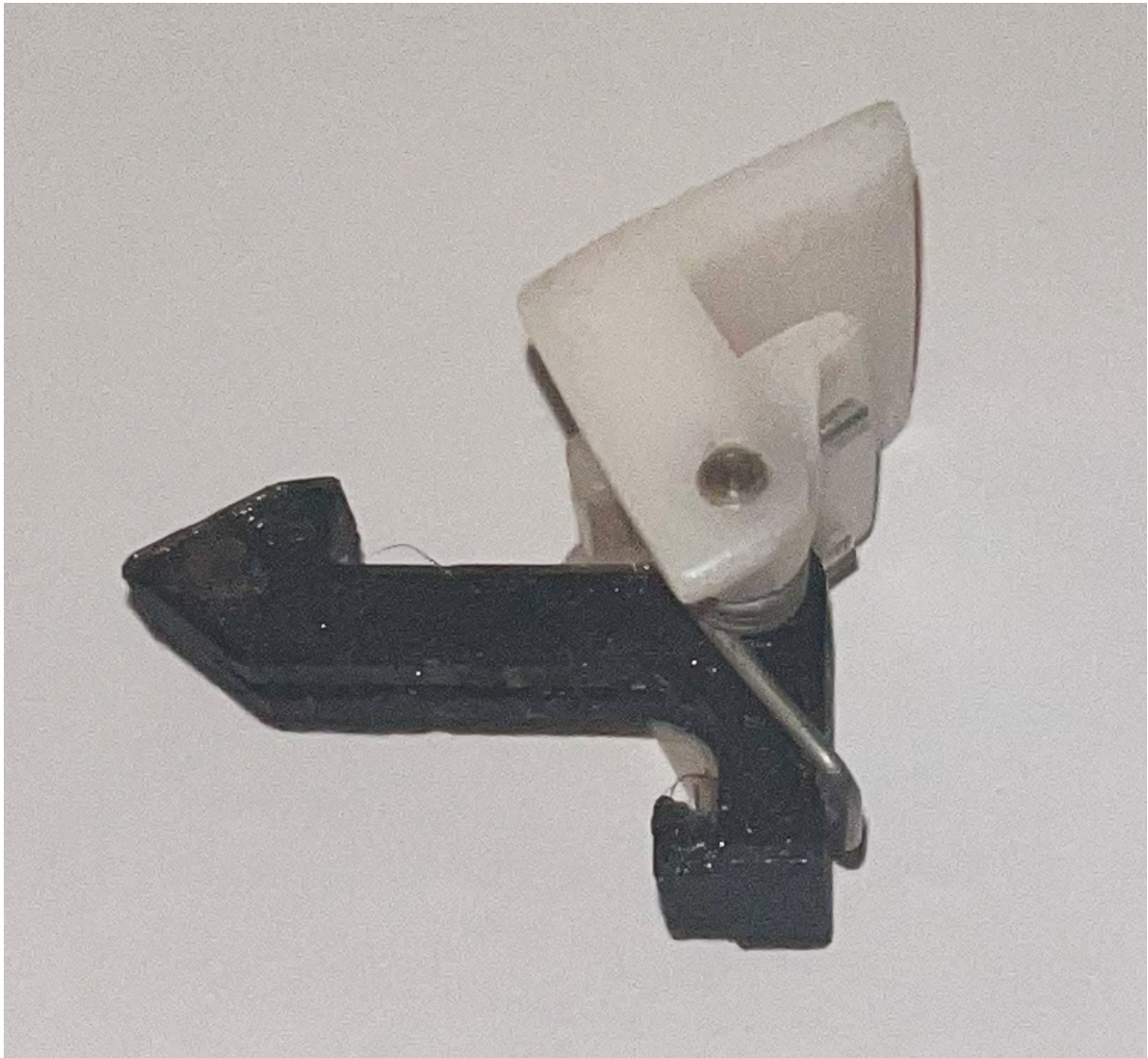


Plastic had cracked around the hinge and door would fall off.

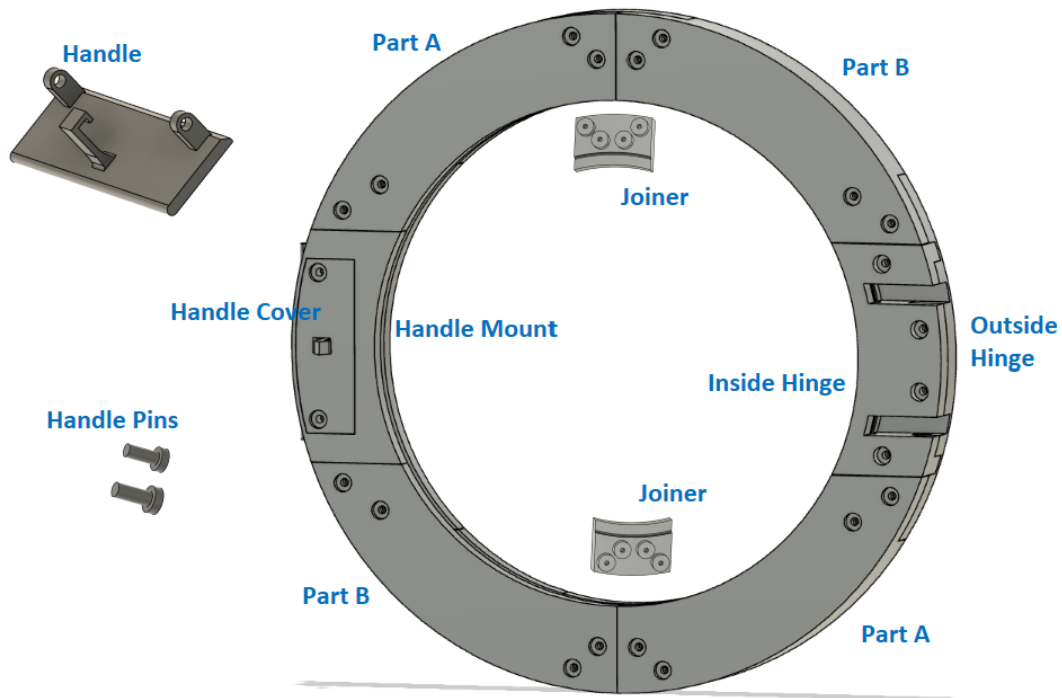
Solution: Print a new door surround.

Designed and printed new door surround. It is split into a number of parts to allow it to print on a 250mm x 210mm print bed.

Also had to design a new latch as the original cracked. It is the same as the original so the spring, shaft and latch assembly could be re-used.



Re-used the existing glass bowl and latch spring assembly.
Also require 22) 3/16 inch x 18mm mushroom head bolts and square nuts.
Have included step files if you would like to modify the design for your washing machine.



Printing the parts: I printed the parts in PETG with a 0.2mm layer height and 5 perimeters.

I painted on organic supports on the handle and added supports to the groove for the glass bowl on parts A, B and the handle mount. You can print these without supports and it prints but need to do a bit of cleanup to assemble.

Assembly: Summary of assembly is to make 2 halves, one with the handle assembly and the other with the hinge assembly. Then join them together with the 2 joiners.

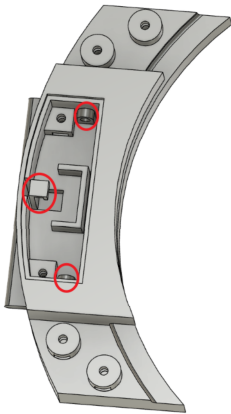
Details: Attach the inside and outside hinge parts to the hinge of the washing machine and secure with bolts. The outside hinge, handle mount and joiners have slots for the square nuts. Then attach a Part A and Part B to the hinge assembly.

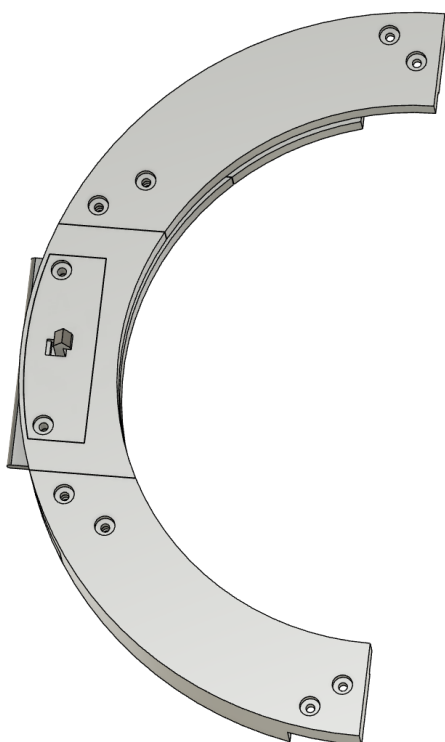
To make the handle assembly insert the square nuts in the handle mount and then attach the latch assembly to the handle mount.



Slot the handle through the openings in the handle mount.

Fasten the Handle Cover to the mount with 2 bolts and attach a Part A and Part B to the handle assembly.





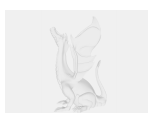
Hold the glass bowl in the slot of the hinge assembly and join it to the handle assembly with the 2 joiners.

Model files

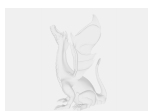


Step Files

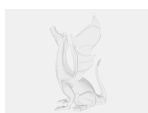
10 files



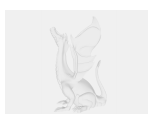
joiner.step



inside-hinge.step



outside-hinge.step



part-a.step



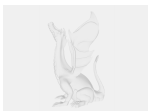
part-b.step



handle-pin.step



latch.step



handle-cover.step



handle-mount.step



handle.step



inside-hinge.stl



outside-hinge.stl



part-a.stl

☐ 2 Needed



part-b.stl

☐ 2 Needed



joiner.stl

☐ 2 Needed



handle-pin.stl



latch.stl

☐ Only needed if existing latch is broken



handle-cover.stl



handle-mount.stl



handle.stl

License ©

This work is licensed under a
[Creative Commons \(4.0 International License\)](#)



Attribution

- ✗ | Sharing without ATTRIBUTION
- ✓ | Remix Culture allowed
- ✓ | Commercial Use
- ✓ | Free Cultural Works
- ✓ | Meets Open Definition

