

Glass Shelf Hanger 1/8"



FunkyNuggets007

[VIEW IN BROWSER](#)

updated 8. 10. 2023 | published 8. 10. 2023

Summary

I decided to make shelves in my kitchen for spice racks.

[Household](#) > [Kitchen](#)

Tags: [hanger](#) [support](#) [glass](#) [thingiverse](#)

I decided to make shelves in my kitchen for spice racks. I decided to make some supports for the glass to rest on. For me to install these, it was a bit tedious, the glass wasn't cut straight and the cabinet wasn't straight either, (go figure :|). Hope this helps you :)

I printed at 100% infill for strength, I'm sure less infill would be fine, but i'm paranoid because of glass being used, lol

Print Settings

Printer Brand:

Creality

Printer:

Ender 3

Rafts:

No

Supports:

No

Resolution:

200

Infill:

100

Filament: PolyMaker PLA Any :)

Category: 3D Printing

Model files

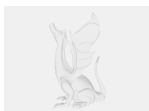


glass_shelf_hanger.skp



glass_shelf_hanger.stl

Other files



glass_shelf_hanger.pdf

[Find source .stl files on Thingiverse.com](#)

License ©

This work is licensed under a
Creative Commons (4.0 International License)



Attribution

- ✗ | Sharing without ATTRIBUTION
- ✓ | Remix Culture allowed
- ✓ | Commercial Use
- ✓ | Free Cultural Works
- ✓ | Meets Open Definition