



Lonely Tree - HueForge



JamesThePrinter

[VIEW IN BROWSER](#)

updated 5. 12. 2023 | published 5. 12. 2023

Summary

HueForge version of "Lonely Tree", created with permission from the original artist

[Art & Design](#) > [Wall-mounted](#)

Tags: [art](#) [painting](#) [5x7](#) [hueforge](#) [nettie](#) [canvasboard](#)

Lonely Tree - a painting by Nettie Andrews. 5x7in, just as the original.

I have also created a [frame](#) that fits this model.

If you are not planning to use the same filaments, use some sort of **black, dark gray, light gray, then white.**

Print at 100% infill with a layer height of 0.08mm with a base layer of 0.16mm

Filaments Used:

PLA BambuLab Matte Charcoal Transmission Distance: 0.6

PLA PolyTerra Fossil Grey Transmission Distance: 0.3

PLA BambuLab Matte Ash Gray Transmission Distance: 1.5

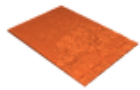
PLA BambuLab Matte Ivory White Transmission Distance: 4

Swap Instructions:

Start with Charcoal

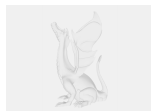
At layer #14 (1.2mm) swap to Fossil Grey
At layer #27 (2.24mm) swap to Ash Gray
At layer #29 (2.4mm) swap to Ivory White for the rest.

Model files



lonelytree_front_127x178.stl

Other files



lonelytree_describe.txt

License ©



This work is licensed under a
[Creative Commons \(4.0 International License\)](#)

Attribution-ShareAlike

-
- ✖ | Sharing without ATTRIBUTION
 - ✓ | Remix Culture allowed
 - ✓ | Commercial Use
 - ✓ | Free Cultural Works
 - ✓ | Meets Open Definition