



Bemis No-Slam Toilet Seat Hinge Part



Brent Wood

[VIEW IN BROWSER](#)

updated 14. 10. 2023 | published 14. 10. 2023

Summary

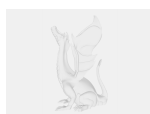
Replacement for broken Bemis toilet seat hinge part

[Household](#) > [Bathroom](#)

Tags: [toilet](#) [seat](#) [hinge](#) [toiletseat](#) [bemis](#)

No-slam toilet seat hinges are subject to high stresses when the seat is quickly forced closed. This part replaces one of the hinge halves to salvage the seat. I used PETG but other materials might also work. Hexagon screw holes were used to avoid supports in holes. The printing orientation is critical for strength and is shown with supports. I used 10 perimeters and solid rectangular infill with 0.40 mm nozzle and 0.20 layer height. STEP, STL and SolidWorks files are supplied.

Model files



toilet-seat-hinge3.step



toilet-seat-hinge3.stl



toilet-seat-hinge3.sldprt

License ©

This work is licensed under a
[Creative Commons \(4.0 International License\)](#)



Attribution

-
- ✗ | Sharing without ATTRIBUTION
 - ✓ | Remix Culture allowed
 - ✓ | Commercial Use
 - ✓ | Free Cultural Works
 - ✓ | Meets Open Definition