



Bambu Lab AMS Spool Guard



dkarjadi

[VIEW IN BROWSER](#)

updated 19. 10. 2023 | published 19. 10. 2023

Summary

A Mod that's designed to help prevent the spools from being pulled up by the extruder when there's little filament left

[3D Printers](#) > [Bambu Lab Parts & Upgrades](#)

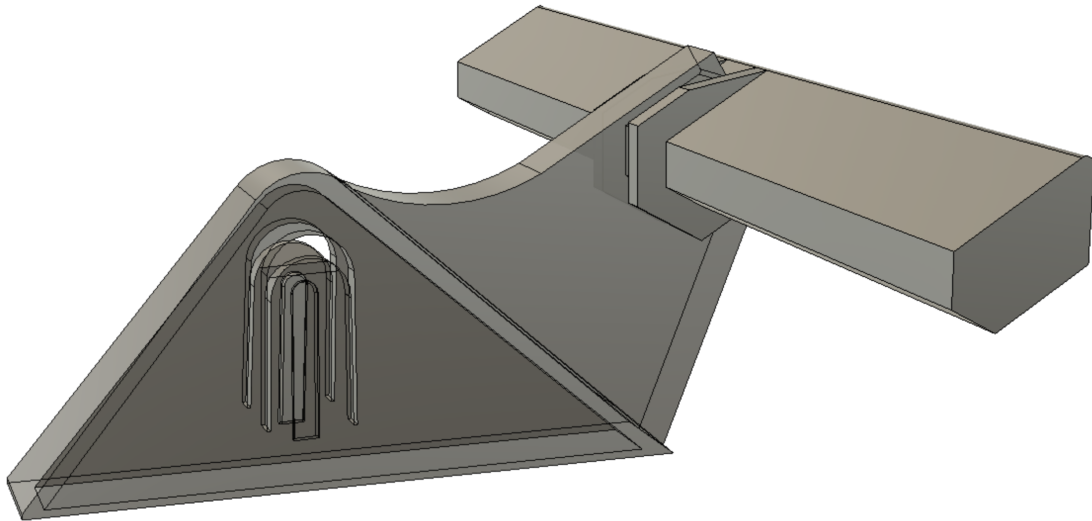
Tags: [spool](#) [spoolmount](#) [bambulab](#) [bambuams](#)

If you have experienced your spool being pulled up (against the lid) in your AMS when there's little left on the spool... then this Mods maybe just for you.

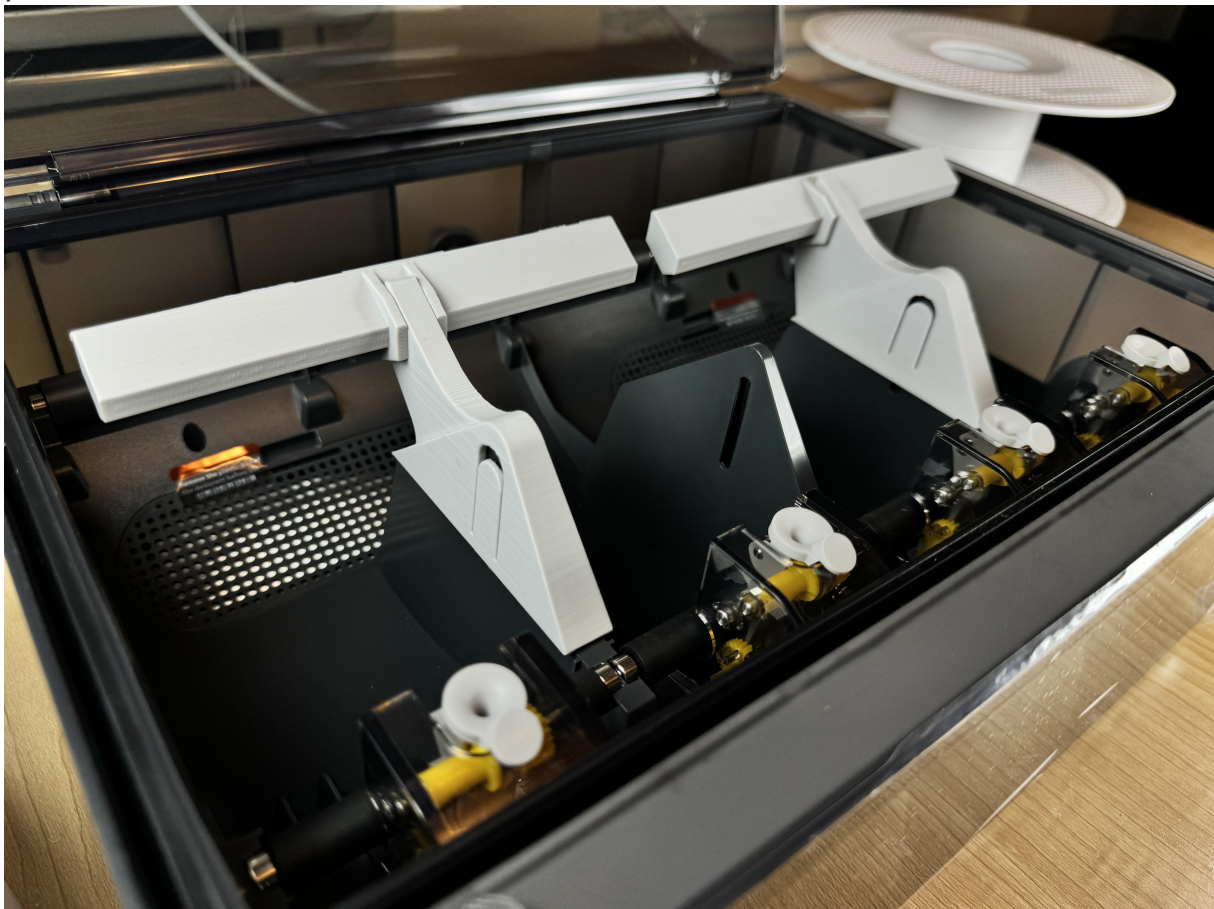
This solution may or may not work... it is work in progress!

Updates are at the bottom, check it out before printing

This is a simple design, that hopefully will work for you.
It has 2 parts, the "anchor" and the "Bar"



It took me quite sometimes for me to study / analyze the AMS system... to find the right place where I can “mount” the “anchor” securely, the design it so you can put it on and take it out with relative ease.
You will need 1 sets for 2 spools, so you want to cover all 4 spools, just print it twice.



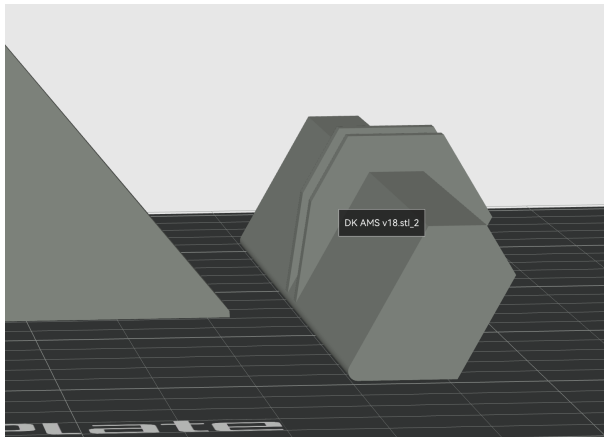
Nothing to buy from AMAZON for this 😊, Just print and install on your AMS.
Please watch the youtube video on how to install it.

I hope you'll find it useful!,
Thank you!

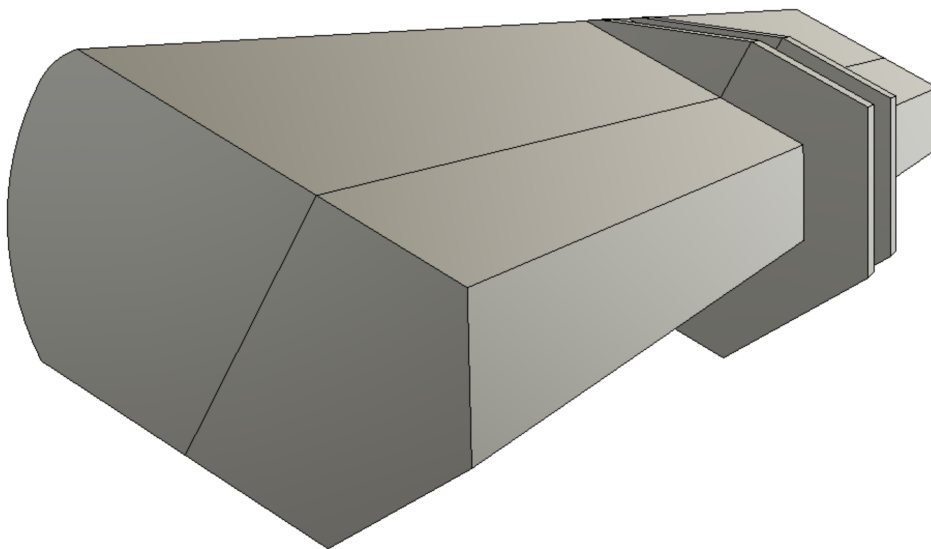
Djundi Karjadi

Update Oct 9 2023:

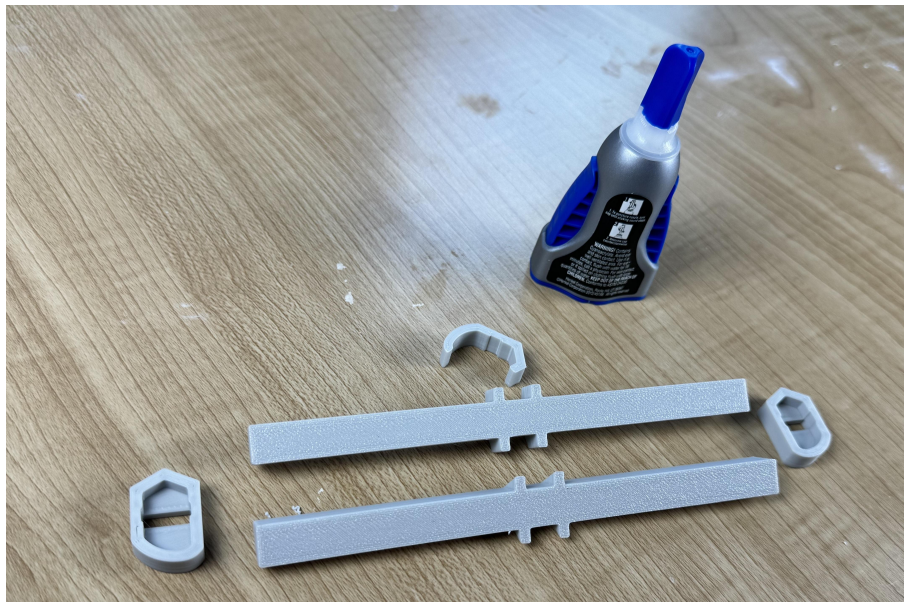
Thank you for many of the feedbacks I got from the facebook groups! I love that users shared ideas and together we can make it better.



I am working on adding 608 bearings to the “Bar” to reduce the possibility of additional drag to the spool / motor. But in the mean time... some users wanted a more rounded face towards the back of the spool... That was an issue because I needed a flat surface facing the bed... I just got an idea, why not split it... and print the bar in 2 parts, then glue them together?



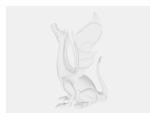
Added 3 pcs of “Jigs” to hold the 2 piece together after gluing... left right and middle



3MF and Step file updated.

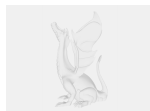
Update Oct 19 2023 : updated the 3mf - adding BRIM to the mount for people who were having problems printing them,
Thanks!

Model files



dk-ams-v21.3mf

☐ Updated adding BRIM to the mount for people who were having issues printing them.



dk-ams-v20.step

License ©

This work is licensed under a
[Creative Commons \(4.0 International License\)](#)



Attribution—Noncommercial—Share Alike

- ✗ | Sharing without ATTRIBUTION
- ✓ | Remix Culture allowed

- ✖ | Commercial Use
- ✖ | Free Cultural Works
- ✖ | Meets Open Definition