

PET / PCO28 to Camlock adapter



Riwakalust

[VIEW IN BROWSER](#)

updated 13. 10. 2023 | published 13. 10. 2023

Summary

Adapter from PET to camlock to fit kegland carb caps to pumps.

[Household](#) > [Other House Equipment](#)

Tags: [brewing](#) [brewery](#)

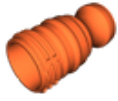
This adapter will let you connect a brewzilla or modified grainfather to a PET thread to easily connect to beer taps using the kegland carb caps, for beer line cleaning at the correct temperature for your cleaning chemicals, like pbw, sodium percarbonate or nappy san, oxy whatever.

This remix is based on



PET bottle PCO28 1810 thread standard models
by steffanders

Model files



pet-camlock-rev2.stl

☐ added material to the bottom of the camlock for a slightly tighter fit

License ©

This work is licensed under a
[Creative Commons \(4.0 International License\)](#)



Attribution

-
- ✗ | Sharing without ATTRIBUTION
 - ✓ | Remix Culture allowed
 - ✓ | Commercial Use
 - ✓ | Free Cultural Works
 - ✓ | Meets Open Definition