



Pug Keychain



cyanidesugar

[VIEW IN BROWSER](#)

updated 9. 10. 2023 | published 9. 10. 2023

Summary

A keychain for pug lovers everywhere!

[Fashion](#) > [Other Fashion Accessories](#)

Tags: [dog](#) [pug](#) [tag](#) [keyholder](#) [keychain](#) [key](#) [keycap](#)
[pets](#) [keychains](#) [dogs](#) [keytag](#) [tags](#)

This is a keychain is 60mm x 50mm, and prints in about 35 minutes. Quick and easy print, and is durable at 2mm thick. I used the Hueforge program to generate the STL for this print, and it only uses 3 filament changes/swaps.

In the 3MF file you will see that I used a layer height modifier so that the base black layers are printed faster (at 0.2mm rather than 0.16). This is purely for efficiency. You can disregard it, and just print it at 0.08mm layer height the whole way through (except for the base at 0.16).

If you do not have an AMS/MMU, just pause the print at the appropriate layer, swap your filament spool, and resume the print!

Print at 100% infill with a layer height of 0.08mm with a base layer of 0.16mm

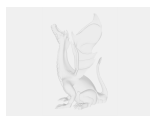
Filaments Used:

- PLA Siddament Black Transmission Distance: 0.2
- PLA+ eSun Grey Transmission Distance: 1.4
- PLA META Sunlu White Transmission Distance: 9.6

Swap Instructions:

- Start with Black
- At layer #16 (1.36mm) swap to Grey
- At layer #17 (1.44mm) swap to White for the rest.

Model files



pugglasses_front_52x65.3mf



pugglasses_front_52x65.stl

Other files



pugglasses_describe.txt

License

This work is licensed under a
Creative Commons (4.0 International License)



Attribution—Noncommercial—Share Alike

-
- ✗ | Sharing without ATTRIBUTION
 - ✓ | Remix Culture allowed
 - ✗ | Commercial Use

- ✖ | Free Cultural Works
- ✖ | Meets Open Definition