



Corner Connector (40x40x40x5x5)



Wilko

[VIEW IN BROWSER](#)

updated 12. 4. 2022 | published 21. 3. 2021

Summary

Depending on what you want to build this plastic one might replace metal original. Sides: 40mm x 40mm x 40mm Thickness:...

[Hobby & Makers](#) > [Other Ideas](#)

Tags: [furniture](#) [diy](#) [replacement](#) [fusion360](#)
[autodeskfusion360](#) [replacementpart](#) [replacementparts](#)
[furniturerepair](#)

Depending on what you want to build this plastic one might replace metal original.

Sides: 40mm x 40mm x 40mm

Thickness: 5mm

Hole diameter: 5mm

hashtag uploading old stuff

If you're interesting in this thing, you might want to check those too:

<https://www.prusaprinters.org/social/3373-wilko/collections/36013>

Print Settings

Printer Brand:

Prusa

Printer:

i3 MK3

Rafts:

No

Supports:

No

Resolution:

0.2mm

Infill:

5% - 20% (doesn't matter)

Notes:

If you want stronger parts, increase the number of perimeters and the top / bottom layers. You can find more information about this topic here:<https://www.youtube.com/watch?v=AmEaNAwFSfl&t=491s>

Category: Replacement Parts

Model files



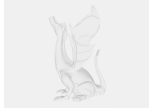
cornerconnector_40x40x40x5x5low.stl



cornerconnector_40x40x40x5x5high.stl



cornerconnector_40x40x40x5x5.f3d



cornerconnector_40x40x40x5x5.step

[Find source .stl files on Thingiverse.com](#)

License

This work is licensed under a
Creative Commons (4.0 International License)



Attribution

-
- ✗ | Sharing without ATTRIBUTION
 - ✓ | Remix Culture allowed
 - ✓ | Commercial Use
 - ✓ | Free Cultural Works
 - ✓ | Meets Open Definition