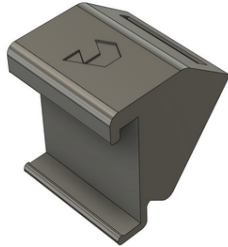


3D MODEL ONLY



Spool holder adapter V1



Vlado Turek

[VIEW IN BROWSER](#)

updated 9. 10. 2023 | published 9. 10. 2023

Summary

If you need to hang your filaments lower than with the original holder.

[3D Printers](#) > [Prusa Parts & Upgrades](#)

Tags: [spool](#) [mk3](#) [holder](#) [filament](#) [adapter](#) [mk4](#)

For higher strength I recommend printing with 7-8 perimeters.

Model files



adapter-v1.stl

License ©

This work is licensed under a
Creative Commons (4.0 International License)



Attribution—Noncommercial—No Derivatives

- ✗ | Sharing without ATTRIBUTION
- ✗ | Remix Culture allowed
- ✗ | Commercial Use
- ✗ | Free Cultural Works
- ✗ | Meets Open Definition