

new cutting knife version



muimoon

[VIEW IN BROWSER](#)

updated 10. 10. 2023 | published 10. 10. 2023

Summary

This version you don't need to update your cw2 extruder, all printer parts are for the hotend area.

[3D Printers](#) > [Voron Parts & Upgrades](#)

It is still a test version!!!!

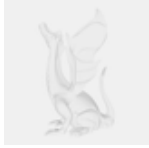
This design only suit for phaetus dragon or any other hotend which tight by four screws on the top. And you have to use CW2 extruder to make sure the knife working correctly.

you don't need to modify your CW2 extruder or any extra "arm" parts. only one hook is enough.

The "cutting part. f3d" file is a "shape" solid part, one is for you to cut, one is for you to add. (use combine tools). you can use it to modify your own hotend module.

by the way, my knife size is 35.7x5.8x0.5(#4).

This remix is based on

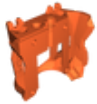


VORON StealthBurner

Model files



hook.stl



sb-dragon-th-rear-cw2.stl



original.stl



cutting-part.f3d

License

This work is licensed under a
[Creative Commons \(International License\)](#)



Public Domain

- ✓ | Sharing without ATTRIBUTION
- ✓ | Remix Culture allowed
- ✓ | Commercial Use
- ✓ | Free Cultural Works
- ✓ | Meets Open Definition

