

RME Fireface UC knob insert



haraldan

[VIEW IN BROWSER](#)

updated 9. 10. 2023 | published 9. 10. 2023

Summary

Replacement plastic insert for the control knob on an RME Fireface UC audio interface



0.51 hrs



1 pcs



0.10 mm



0.25 mm



PET



1 g



Prusa MINI /
MINI+

[Gadgets](#) > [Audio](#)

Tags: [knob](#) [diy](#) [replacement](#) [electronics](#) [knobs](#) [step](#)
[f3d](#)

The knob on my RME audio interface has been broken for years before I even got a 3D printer, and I haven't been able to find a replacement part for it. Now, through the power of CAD and 3D printing, I made my own!

The insert is rather complicated and delicate, since it serves two additional purposes: holding the knob in and allowing it to be pressed via a thin cylinder on the end. This means that it's probably very difficult to print it using a 0.4mm nozzle, though you are welcome to try.

I printed mine in PETG on a Prusa Mini+ with a 0.25mm nozzle, 0.1mm layer height and a brim, and it works flawlessly.

F3D and STEP files are included, so feel free to modify the model to fit other devices.

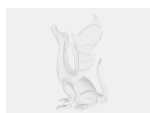
Model files



rme_knob-v10.stl



rme_knob-v10.3mf



rme_knob.step



rme_knob.f3d

Print files



rme_knob-v10_025n_01mm_petg_mini_31m.gcode

⚙ PET ⚙ 0.25 mm ⚙ 0.10 mm ⌚ 0.51 hrs ⚖ 1 g 🖨 Prusa MINI / MINI+

License ©

This work is licensed under a
[Creative Commons \(4.0 International License\)](https://creativecommons.org/licenses/by-sa/4.0/)



Attribution-ShareAlike

- ✗ | Sharing without ATTRIBUTION
- ✓ | Remix Culture allowed
- ✓ | Commercial Use
- ✓ | Free Cultural Works
- ✓ | Meets Open Definition