



Pumpkin Halloween Wall Art Decoration (SC/AMS/MM)



TwistedSoul

[VIEW IN BROWSER](#)

updated 14. 10. 2023 | published 14. 10. 2023

Summary

An easy to mount/hang Pumpkin that has a small 3D effect. Easy single or multi-colour printing.

[Seasonal designs](#) > [Autumn & Halloween](#)

Tags: [halloween](#) [decoration](#) [multimaterial](#) [multicolor](#)
[pumpkin](#) [wallmount](#) [easy](#) [fastprint](#) [ams](#)

Update: 2023-10-14

Updated the model with a “push-pin” that fits flush in the holes so it can be secured with cable ties at the rear. The slot is 2mm x 5mm, so big enough for most small cable ties.

They can be printed **without supports** if your printer is well dialled in, otherwise use trees and don't forget to make them the same colour as the body if you want them to blend in.

Model parts also renamed to better show what they are.

About this model

This model is split into multiple bodies so that it can be easily coloured.

It also features two 6mm holes on either side so it can be screwed/pinned/hung/cable-tied.

I printed mine in PETG for outdoor weather resistance with 15% Gyroid infill.

If you print in dual colour like mine, there are 17 filament changes, so make sure to tune your flushing volumes to avoid waste.

Released as CC BY 4.0 because I'm tired of everything being NC.

If you really like my stuff, you can buy me a Kofi <https://ko-fi.com/twistedoul>

Model files

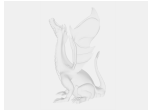


pumpkindeco-v4.3mf

☐ Added push pin, print x2.



pumpkindeco-v4.step



pumpkindeco-v1.3mf

☐ Original version, no push pins.

License ©

This work is licensed under a
[Creative Commons \(4.0 International License\)](https://creativecommons.org/licenses/by/4.0/)



Attribution

- ✗ | Sharing without ATTRIBUTION
- ✓ | Remix Culture allowed
- ✓ | Commercial Use
- ✓ | Free Cultural Works

✓ | Meets Open Definition