

Stealthburner Cable Bridge Mod



Dylanvl

[VIEW IN BROWSER](#)

updated 10. 10. 2023 | published 10. 10. 2023

Summary

This holds the EBB SB2240/2209 board and the CAN cable (PG7 Cable Gland).

[3D Printers](#) > [Voron Parts & Upgrades](#)

Tags: [cablemanagement](#) [voron](#) [voronmod](#) [stealthburner](#)

This holds the EBB SB2240/2209 board and the can cable (PG7 Cable Gland).

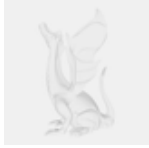
And is ready to print!

There are 2 models:

- The center model that has the PG7 Cable Gland mount in the middle but blocks the usb-c port.
- The offset model that has a bit more space to use the usb-c port.

I used the print setting that are recommended for printing voron parts.

This remix is based on



None

Model files



cw2-cable-bridge-center.stl



cw2-cable-bridge-offset.stl

License

This work is licensed under a
[Creative Commons \(4.0 International License\)](#)



Attribution

-
- ✗ | Sharing without ATTRIBUTION
 - ✓ | Remix Culture allowed
 - ✓ | Commercial Use
 - ✓ | Free Cultural Works
 - ✓ | Meets Open Definition