



## GreatJoy Anamorphic Lens Foregrip SSD Slot



Dr Quads

[VIEW IN BROWSER](#)

updated 13. 10. 2023 | published 13. 10. 2023

### Summary

made for the greatjoy 1.8X Anamorphic lens and JEYI M.2 ssd

[3D Printers](#) > [Accessories](#)

Tags: [camera](#) [ssd](#) [s5iix](#) [greatjoy](#)

guide coming soon

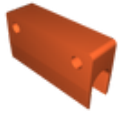
### Model files



**ssd-handle-side-shorter-v2.stl**



**greatjoy-lens-foregrip-v5-flat.stl**



ssd-handle-lens-v4-cap.stl



ssd-handle-lens-v4-support.stl

## License

This work is licensed under a  
[Creative Commons \(4.0 International License\)](#)



**Attribution-NonCommercial**

- 
- ✗ | Sharing without ATTRIBUTION
  - ✓ | Remix Culture allowed
  - ✗ | Commercial Use
  - ✗ | Free Cultural Works
  - ✗ | Meets Open Definition