



## Prusa Mini tool holder Version 2.0



Nomadworks

[VIEW IN BROWSER](#)

updated 21. 7. 2021 | published 21. 3. 2021

### Summary

Extra holder for digital caliper, use double sided tape on the top part



2.52 hrs



1 pcs



0.20 mm



0.40 mm



PLA



27 g



Prusa MINI /  
MINI+

[3D Printers](#) > [3D Printers - Upgrades](#)

Extra slot for digital caliper, when put in place use double-sided tape on the inside of top part.

### Printing instructions

I recommend using PLA

15% infill

I recommend printing at 0.2mm height max,

Use of brim so you dont get any warping

Extra slot for digital caliper, when put in place use double-sided tape on the inside of top part.

## Buy me a coffee

If you appreciate my work, you can [Buy me a coffee](#). Appreciated !

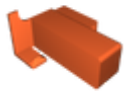
## This remix is based on



### Prusa MINI tool holder

by Gilly Barr

## Model files



toolholderv20.stl

## Print files



toolholderv2.gcode

🌀 PLA 📏 0.40 mm 📐 0.20 mm ⌚ 2.52 hrs ⚖️ 27 g 🖨️ Prusa MINI / MINI+

## License ©

This work is licensed under a  
[Creative Commons \(International License\)](#)



**Public Domain**

- 
- ✓ | Sharing without ATTRIBUTION
  - ✓ | Remix Culture allowed

- ✓ | Commercial Use
- ✓ | Free Cultural Works
- ✓ | Meets Open Definition