



Dyson DC26 left wheel replacement part (remixed)



imototakashi

[VIEW IN BROWSER](#)

updated 25. 1. 2024 | published 25. 1. 2024

Summary

This is a replacement part for the Dyson DC26 left wheel (remixed)



7.93 hrs



4 pcs



0.20 mm



0.40 mm



PET



181 g



Prusa MK4

[Household](#) > [Other House Equipment](#)

Tags: [dyson](#) [freecad](#) [dysonvacuum](#) [dysondc26](#)

Description

This is a replacement part for the Dyson DC26 left wheel.

I accidentally broke the Dyson DC26 left wheel but couldn't find any replacement part, so I designed this.

This replacement model has a different shape than the original, but it works fine!

- Create a base by gluing base1 and base2.
- Screw the base to Dyson DC26 using three original screws.
- Insert the wheel into the base.
- Fit the cover so that the arrow mark on the back points upward.

This remix is based on



Dyson DC26 left wheel replacement part

by imototakashi

Model files



dyson-dc26-wheelv7-base2.3mf



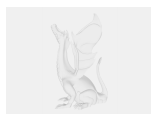
dyson-dc26-wheelv7-wheel.3mf



dyson-dc26-wheelv7-base1.3mf



dyson-dc26-wheelv7-cover.3mf



dyson-dc26-wheelv7.fcstd

☐ FreeCad source

Print files



dyson-dc26-wheelv7-base1_04n_02mm_petg_mk4is_1h41m.gcode

 PET  0.40 mm  0.20 mm  1.68 hrs  31 g  Prusa MK4



dyson-dc26-wheelv7-wheel_04n_02mm_petg_mk4is_2h49m.gcode

PET 0.40 mm 0.20 mm 2.81 hrs 65 g Prusa MK4



dyson-dc26-wheelv7-base2_04n_02mm_petg_mk4is_1h31m.gcode

PET 0.40 mm 0.20 mm 1.52 hrs 31 g Prusa MK4



dyson-dc26-wheelv7-cover_04n_02mm_petg_mk4is_1h55m.gcode

PET 0.40 mm 0.20 mm 1.92 hrs 54 g Prusa MK4

License



This work is licensed under a
[Creative Commons \(4.0 International License\)](#)

Attribution-ShareAlike

- ✗ | Sharing without ATTRIBUTION
- ✓ | Remix Culture allowed
- ✓ | Commercial Use
- ✓ | Free Cultural Works
- ✓ | Meets Open Definition