

## Ersatzrad für Radlaufglocke [Tire Bell]

 **EmmEff**

[VIEW IN BROWSER](#)

updated 9. 10. 2023 | published 9. 10. 2023

### Summary

Replacement wheel for Tire Bell [Radlaufglocke]



0.45 hrs



1 pcs



0.20 mm



0.40 mm



PLA



4 g



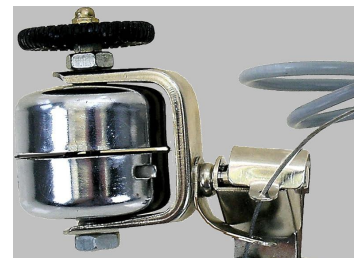
Prusa MINI /  
MINI+

[Hobby & Makers](#) > [Mechanical Parts](#)

Tags: [replacementpart](#) [ersatzteil](#) [fahrradzubehoer](#)

The tire bell is operated with the remote trigger on your handle bar. The bell itself is mounted near the tire. When operated it will use the tire to continuously sound the bell.

Unfortunately, the bell wheel broke during a fall. Using the measurements from the remaining half of the original, I printed a 'replacement wheel.' Just like the original, my replacement wheel is made up of two halves. To create it, you'll need to print the attached object twice. I recommend using the G-Code file. This way, you'll get the



profile (fuzzy) and a smooth surface. Then, you can simply glue the parts together using super glue.

Done.

## Model files



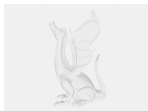
**ersatzrad-fur-radlaufglocke\_tirebell.3mf**

Created with PrusaSlicer 2.6.1



**ersatzrad-fur-radlaufglocke\_tirebell.stl**

Created with FreeCAD 0.20 (29177)



**ersatzrad-fur-radlaufglocke\_tirebell.step**

Created with FreeCAD 0.20 (29177)

## Print files



**radlaufglocke\_02mm\_pla\_mini\_27m.gcode**

PLA 0.40 mm 0.20 mm 0.45 hrs 4 g Prusa MINI / MINI+

## License

This work is licensed under a  
**Creative Commons (4.0 International License)**



**Attribution-NonCommercial**

- ✗ | Sharing without ATTRIBUTION
- ✓ | Remix Culture allowed

- ✖ | Commercial Use
- ✖ | Free Cultural Works
- ✖ | Meets Open Definition