

## 3 Pikmin Characters Remix version



Kaleb08

[VIEW IN BROWSER](#)

updated 9. 10. 2023 | published 9. 10. 2023

## Summary

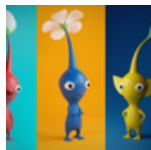
Fixed the old version

---

[3D Printers](#) > [Prusa Parts & Upgrades](#)

---

## This remix is based on



**3 Pikmin Characters**

by PrintChallenge

## Model files



red-pikmin-thicker-legs.stl

# License

This work is licensed under a  
**Creative Commons (4.0 International License)**



**Attribution—Noncommercial—Share Alike**

---

- ✗ | Sharing without ATTRIBUTION
- ✓ | Remix Culture allowed
- ✗ | Commercial Use
- ✗ | Free Cultural Works
- ✗ | Meets Open Definition