



Key Storage and Mini Shelf



ktothestank

[VIEW IN BROWSER](#)

updated 9. 10. 2023 | published 9. 10. 2023

Summary

Store your keys on a conveniently printable shelf for small trinkets or your wallet

[Art & Design](#) > [Wall-mounted](#)

Tags: [shelf](#) [keyholder](#) [keychain](#) [key](#) [keyshelf](#)

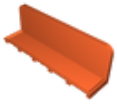
Print Settings:

- 3 or 4 walls
- 5/5 Top Bottom Layers
- 10-20% infill
- 0.25mm +/-tolerance is a must

Design Concepts:

- Comes with a wall drill guide for perfect alignment holes!
- Key adapters are a snug fit but click in with a little effort glue is recommended for a permanent hold
- Might need to use a real key initially to break the spinner free

Model files



key-shelf.stl



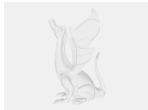
key.stl



drill-template.stl



lock-1.stl



assembly.3mf

License ©

This work is licensed under a
[Creative Commons \(4.0 International License\)](#)



Attribution

-
- ✗ | Sharing without ATTRIBUTION
 - ✓ | Remix Culture allowed
 - ✓ | Commercial Use
 - ✓ | Free Cultural Works
 - ✓ | Meets Open Definition