



GPD Win Max 2 Dock

T Thump2010

[VIEW IN BROWSER](#)

updated 24. 1. 2024 | published 24. 1. 2024

Summary

Drop in GPD Win Max 2 Dock

[Gadgets](#) > [Video Games](#)

Tags: [dock](#) [gpd](#) [gpdwinmax2](#)

Here is a drop in dock for the GPD Win Max 2, to me it is holding it at the perfect angle to type on while able to get plenty of air flow to the vent. I cut out for the speakers, USB ports, micro SD cards etc.

This is big so it probably will not fit on most printers so I made an interlocking split version however I did not test print the split version as my printer is big enough to handle the full dock, try it and let me know how it goes and if it needs tweaking.

I forgot to cutout for the bottom buttons, I made a v2 and it has the cutouts, sorry.

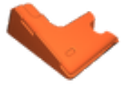
v2.1 Made the cutouts for the back buttons even bigger so no accidental presses when dropping it in the dock.

v3 Added a groove in the front middle to make opening easier

v4 Increased the spacing around the USB A ports as it lifted the Max 2 up a little if something was plugged in.

Model files

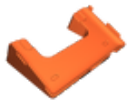
win-max-2-dock-split-left-v4.stl



win-max-2-dock-split-right-v4.stl



win-max-2-dock-v4.stl



License ©

This work is licensed under a
[Creative Commons \(4.0 International License\)](https://creativecommons.org/licenses/by-nc/4.0/)



Attribution-NonCommercial

-
- ✗ | Sharing without ATTRIBUTION
 - ✓ | Remix Culture allowed
 - ✗ | Commercial Use
 - ✗ | Free Cultural Works
 - ✗ | Meets Open Definition